

ZACATECAS

## ---RED FEDERAL LIBRE---

1 Aguascalientes - Jalpa	MEX-070
2 Aguascalientes - Zacatecas	MEX-045
3 Blvd. Guadalupe - Zacatecas - La Escondida	MEX-045
4 Carbonera - T. C. (Ent. Morelos - Saltillo)	MEX-062
5 Ent. Cosío - Ent. Cuauhtémoc	MEX-045
6 Ent. La Chicharrona - Cuencamé	MEX-049
7 Ent. Morelos - Ent. Noria de Gringos	MEX-045
8 Ent. Morelos - Saltillo	MEX-054
9 Ent. Rivier - San Marcos	MEX-066
10 Ent. Tesislán - Ent. Malpaso	MEX-023
11 Fresnillo - Valparaíso	MEX-044
12 Guadalajara - Zacatecas	MEX-054
13 Jerez - Fresnillo	MEX-023
14 Libramiento de Guadalupe - Zacatecas	MEX-045
15 Libramiento de Río Grande	MEX-049
16 Libramiento de Sombrerete	MEX-045
17 Libramiento de Tabasco	MEX-054
18 Providencia - Luis Moya	MEX-071
19 Ramal a Aeropuerto Zacatecas	MEX-045
20 Ramal a Concepción del Oro	MEX-054
21 Ramal a Francisco Murguía (Nieves)	MEX-049
22 Ramal a Gral. Pánfilo Natera	MEX-049
23 Ramal a Ruinas de Chicomostoc	MEX-045
24 Ramal a San Martín	MEX-045
25 Ramal a Villa de Cos	MEX-054
26 San Luis Potosí - Ent. Arcinas	MEX-049
27 San Luis Potosí - Lagos de Moreno	MEX-070-080
28 Zacatecas - Durango	MEX-045

## ---RED FEDERAL DE CUOTA---

29 Ent. Cuauhtémoc - Ent. Osiris (Cuota)	MEX-045D
30 Libramiento de Fresnillo (Cuota)	MEX-045D
31 Libramiento de Víctor Rosales (Cuota)	MEX-045D

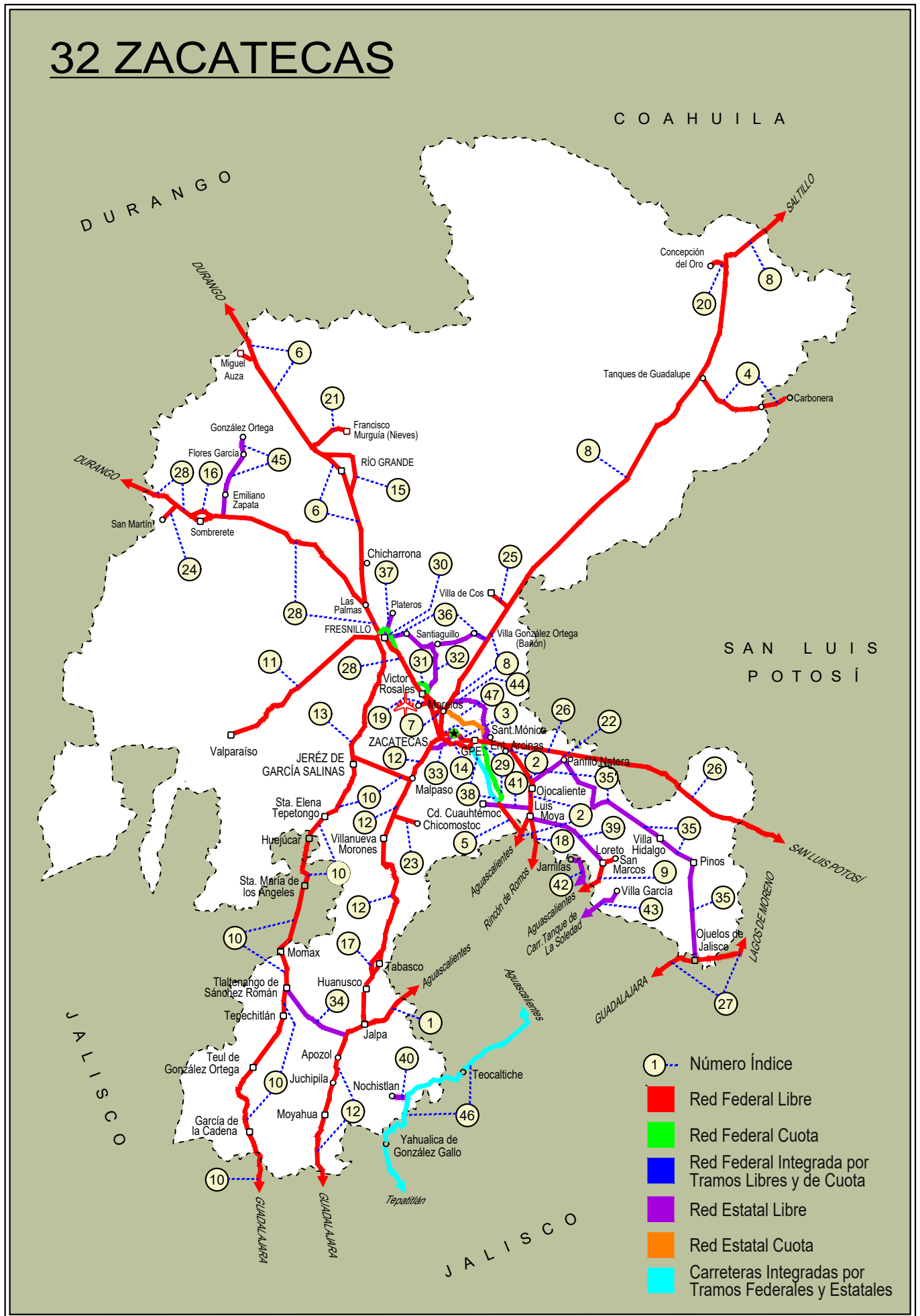
## ---RED ESTATAL LIBRE---

32 Calera de Víctor Rosales - Santiaguillo	ZAC-016
33 Cieneguillas - Zacatecas	ZAC
34 Corral de Piedras - Tlaltenango	ZAC
35 Ent. Ojo Caliente - Ent. Ojuelos de Jalisco	ZAC
36 Fresnillo - Ent. Bañón	ZAC
37 Fresnillo - Plateros	ZAC-022
38 Guadalupe - Ent. Cuauhtémoc	ZAC-118
39 Ramal a Loreto	ZAC
40 Ramal a Nochistlán	ZAC
41 Ramal a San Pedro Piedra Gorda	ZAC-AGS
42 San Gil - Jarillas	AGS-012-ZAC
43 San Rafael - Villa García	AGS-ZAC
44 Santa Mónica - Pozo de Gamboa	ZAC
45 Sombrerete - González Ortega	ZAC
46 Yahualica - Jaralillo	JAL-ZAC

## ---RED ESTATAL DE CUOTA---

47 Libramiento Noreste de Zacatecas (Cuota)	ZAC-D
---	-------

# 32 ZACATECAS





ZACATECAS

1 CARR: Aguascalientes - Jalpa

CLAVE: 00095

RUTA: MEX-070

AÑO: 2025

LUGAR	ESTACION				CLASIFICACION VEHICULAR EN PORCIENTO										COORDENADAS					
	KM	TE	SC	TDPA	M	A	B	C2	C3	T3S2	T3S3	T3S2R4	OTROS	A	B	C	K'	D	LATITUD	LONGITUD
Aguascalientes	0.00	3	1	13670	4.4	90.0	1.2	3.0	0.6	0.3	0.1	0.2	0.2	94.4	1.2	4.4	0.120	0.637	21.874069	-102.334859
Aguascalientes	0.00	3	2	12943	4.6	89.1	1.4	3.1	0.8	0.5	0.1	0.3	0.1	93.7	1.4	4.9	0.096	0.637	21.873917	-102.334814
T. Der. Jesús María	7.30	1	1	12033	4.7	89.2	0.9	3.9	0.7	0.4	0.1	0.1	0.0	93.9	0.9	5.2	0.127	0.618	21.881465	-102.362691
T. Der. Jesús María	7.30	1	2	11758	4.5	88.6	1.1	4.2	0.9	0.4	0.1	0.2	0.0	93.1	1.1	5.8	0.111	0.618	21.881306	-102.362602
T. Izq. Villa Hidalgo	7.80	3	1	7156	2.6	89.7	1.8	2.6	1.3	1.4	0.3	0.2	0.1	92.3	1.8	5.9	0.140	0.687	21.884623	-102.374465
T. Izq. Villa Hidalgo	7.80	3	2	7181	2.4	89.6	1.5	2.8	1.5	1.1	0.5	0.4	0.2	92.0	1.5	6.5	0.154	0.687	21.884457	-102.374517
Libramiento Poniente de Aguascalientes	11.00	1	1	6210	2.1	91.0	1.6	3.0	1.0	0.7	0.3	0.2	0.1	93.1	1.6	5.3	0.210	0.721	21.889823	-102.393945
Libramiento Poniente de Aguascalientes	11.00	1	2	6484	2.3	90.5	1.5	3.2	1.0	0.5	0.4	0.4	0.2	92.8	1.5	5.7	0.180	0.721	21.889711	-102.393991
Libramiento Poniente de Aguascalientes	11.00	3	1	7156	2.5	90.7	0.9	2.8	1.8	0.7	0.2	0.3	0.1	93.2	0.9	5.9	0.174	0.509	21.892704	-102.404790
Libramiento Poniente de Aguascalientes	11.00	3	2	7134	2.4	89.9	1.3	2.7	1.9	0.9	0.3	0.5	0.1	92.3	1.3	6.4	0.152	0.509	21.892666	-102.404803
T. Der. Gracias a Dios	20.00	3	0	11059	2.1	90.5	1.2	3.9	1.0	0.8	0.4	0.1	0.0	92.6	1.2	6.2	0.119	0.663	21.886793	-102.466337
T. Izq. El Salitre	23.17	3	0	8624	3.1	89.1	1.6	2.9	1.4	1.2	0.4	0.2	0.1	92.2	1.6	6.2	0.126	0.588	21.889821	-102.501667
T. Izq. Malpaso	45.10	1	0	8211	3.0	91.1	1.3	2.2	1.0	0.7	0.3	0.3	0.1	94.1	1.3	4.6	0.118	0.612	21.880885	-102.653291
T. Der. Presa La Codorniz	49.30	3	1	10705	4.6	88.7	1.7	2.8	0.7	0.5	0.3	0.4	0.3	93.3	1.7	5.0	0.078	0.511	21.863653	-102.692502
T. Der. Presa La Codorniz	49.30	3	2	10865	4.7	88.1	1.9	2.9	1.1	0.4	0.3	0.4	0.2	92.8	1.9	5.3	0.081	0.511	21.863601	-102.692345
Calvillo	52.30	3	1	5269	2.8	91.9	0.5	2.1	0.9	0.7	0.5	0.4	0.2	94.7	0.5	4.8	0.087	0.503	21.834250	-102.748144
Calvillo	52.30	3	2	5768	3.0	91.8	0.6	2.3	0.7	0.6	0.4	0.3	0.3	94.8	0.6	4.6	0.088	0.503	21.834117	-102.748073
T. Der. Jaltiche de Abajo	63.80	3	0	2778	2.1	89.5	1.2	4.0	1.7	0.9	0.5	0.1	0.0	91.6	1.2	7.2	0.099	0.516	21.773627	-102.803368
Lim. Edos. Term. Ags. Ppia. Zac.	65.66																			
T. C. Guadalajara - Zacatecas	90.66	1	0	5562	2.9	71.0	1.3	17.1	3.3	1.8	1.2	1.2	0.2	73.9	1.3	24.8	0.084	0.524	21.652804	-102.963402

2 CARR: Aguascalientes - Zacatecas

CLAVE: 00524

RUTA: MEX-045

AÑO: 2025

LUGAR	ESTACION				CLASIFICACION VEHICULAR EN PORCIENTO										COORDENADAS					
	KM	TE	SC	TDPA	M	A	B	C2	C3	T3S2	T3S3	T3S2R4	OTROS	A	B	C	K'	D	LATITUD	LONGITUD
Aguascalientes	0.00																			
T. Izq. Pocitos	6.00	1	1	65301	4.6	83.9	1.9	4.6	1.1	0.9	0.5	1.8	0.7	88.5	1.9	9.6	0.067	0.528	21.920001	-102.291665
T. Izq. Pocitos	6.00	1	2	62843	4.6	83.9	1.8	4.9	1.1	0.9	0.4	1.8	0.6	88.5	1.8	9.7	0.062	0.528	21.920012	-102.291879
T. Der. Loreto	9.83	3	1	33295	4.3	85.4	2.0	3.3	1.3	1.9	0.6	0.9	0.3	89.7	2.0	8.3	0.074	0.518	21.972723	-102.289345
T. Der. Loreto	9.83	3	2	31264	4.5	85.8	2.1	3.1	1.2	1.8	0.5	0.8	0.2	90.3	2.1	7.6	0.072	0.518	21.972656	-102.289532
Santa Fé	16.00	1	1	29561	3.1	85.7	2.1	3.5	1.7	2.7	0.6	0.5	0.1	88.8	2.1	9.1	0.103	0.528	22.012918	-102.286824
Santa Fé	16.00	1	2	28950	2.9	85.7	2.3	3.6	1.5	2.5	0.6	0.6	0.3	88.6	2.3	9.1	0.099	0.528	22.013008	-102.286938
Santa Fé	16.00	3	1	24990	2.3	83.9	2.7	3.7	2.1	3.0	0.9	1.2	0.2	86.2	2.7	11.1	0.099	0.613	22.025401	-102.283721
Santa Fé	16.00	3	2	26494	2.2	84.1	2.5	3.8	2.0	2.9	1.0	1.3	0.2	86.3	2.5	11.2	0.105	0.613	22.025479	-102.283839
La Concepción	18.00	3	1	27615	1.7	80.1	2.9	4.9	2.0	5.2	1.2	1.6	0.4	81.8	2.9	15.3	0.083	0.559	22.037766	-102.280859

ZACATECAS

2 CARR: Aguascalientes - Zacatecas

CLAVE: 00524

RUTA: MEX-045

AÑO: 2025

LUGAR	ESTACION				CLASIFICACION VEHICULAR EN PORCIENTO														COORDENADAS	
	KM	TE	SC	TDPA	M	A	B	C2	C3	T3S2	T3S3	T3S2R4	OTROS	A	B	C	K'	D	LATITUD	LONGITUD
La Concepción	18.00	3	2	25311	1.9	79.2	3.2	5.0	1.8	5.5	1.4	1.8	0.2	81.1	3.2	15.7	0.115	0.559	22.037694	-102.281018
T. C. Libramiento San Francisco de Los Romo	19.00	3	0	14695	5.4	82.3	1.8	3.4	2.6	1.6	1.3	1.3	0.3	87.7	1.8	10.5	0.074	0.503	22.056229	-102.277270
San Francisco de Los Romo	22.73	1	1	7173	7.5	85.3	1.3	2.7	1.3	0.8	0.3	0.5	0.3	92.8	1.3	5.9	0.078	0.549	22.064979	-102.275375
San Francisco de Los Romo	22.73	1	2	7443	7.4	84.9	1.6	3.0	1.2	0.8	0.3	0.4	0.4	92.3	1.6	6.1	0.093	0.549	22.064998	-102.275528
T. Izq. Libramiento San Francisco de Los Romo	24.80	3	1	20534	2.6	79.0	3.9	4.0	1.8	5.4	1.2	1.5	0.6	81.6	3.9	14.5	0.093	0.592	22.101186	-102.274391
T. Izq. Libramiento San Francisco de Los Romo	24.80	3	2	21122	2.8	77.7	4.0	4.2	2.0	5.6	1.4	1.9	0.4	80.5	4.0	15.5	0.093	0.592	22.101185	-102.274523
T. Der. Estación Pabellón	31.00	1	1	16601	2.5	78.1	3.1	3.6	2.0	6.6	1.5	2.1	0.5	80.6	3.1	16.3	0.098	0.591	22.131552	-102.286258
T. Der. Estación Pabellón	31.00	1	2	18789	2.3	78.2	2.7	3.7	2.2	6.8	1.7	2.0	0.4	80.5	2.7	16.8	0.094	0.591	22.131507	-102.286392
T. Der. Estación Pabellón	31.00	3	1	15211	4.2	74.0	4.1	4.8	1.9	7.0	1.3	2.1	0.6	78.2	4.1	17.7	0.078	0.569	22.151843	-102.295007
T. Der. Estación Pabellón	31.00	3	2	16262	4.0	74.9	3.9	4.4	2.0	6.8	1.6	2.0	0.4	78.9	3.9	17.2	0.086	0.569	22.151669	-102.295084
T. Der. Libramiento Rincón de Romos	35.50	1	1	11529	2.7	75.4	3.6	4.5	1.9	7.2	1.4	2.3	1.0	78.1	3.6	18.3	0.091	0.521	22.174107	-102.295488
T. Der. Libramiento Rincón de Romos	35.50	1	2	12812	2.6	75.5	3.8	4.3	1.8	7.1	1.5	2.6	0.8	78.1	3.8	18.1	0.084	0.521	22.173972	-102.295613
T. Der. Libramiento Rincón de Romos	35.50	3	1	5823	3.3	88.5	1.8	4.5	0.5	0.6	0.4	0.3	0.1	91.8	1.8	6.4	0.086	0.647	22.199195	-102.302963
T. Der. Libramiento Rincón de Romos	35.50	3	2	5773	3.4	88.5	1.7	4.5	0.7	0.5	0.2	0.4	0.1	91.9	1.7	6.4	0.121	0.647	22.199062	-102.303037
Rincón de Romos	40.90	3	0	6991	2.3	93.8	1.5	1.9	0.4	0.1	0.0	0.0	0.0	96.1	1.5	2.4	0.085	0.542	22.237438	-102.317685
T. Libramiento Rincón de Romos Norte	46.00																			
La Punta	51.00	1	1	10712	3.3	68.0	6.1	5.1	2.1	9.2	2.1	3.2	0.9	71.3	6.1	22.6	0.090	0.623	22.313727	-102.296733
La Punta	51.00	1	2	9903	3.6	67.1	5.9	5.0	2.0	9.8	2.7	3.1	0.8	70.7	5.9	23.4	0.072	0.623	22.313755	-102.296824
La Punta	51.00	3	1	10077	4.0	62.6	6.5	5.5	2.7	12.0	2.2	3.6	0.9	66.6	6.5	26.9	0.070	0.544	22.334349	-102.292542
La Punta	51.00	3	2	10511	4.6	62.9	6.2	5.2	2.6	12.2	2.1	3.4	0.8	67.5	6.2	26.3	0.075	0.544	22.334644	-102.292665
Cosío	56.00	3	1	8849	3.3	65.9	5.7	3.8	2.3	12.0	2.3	3.9	0.8	69.2	5.7	25.1	0.085	0.638	22.372701	-102.298537
Cosío	56.00	3	2	8552	3.5	66.6	5.4	4.0	1.9	12.0	2.1	3.6	0.9	70.1	5.4	24.5	0.073	0.638	22.373176	-102.298757
Ent. Cosío	57.30																			
Lim. Edos. Term. Ags. Ppia. Zac.	62.67																			
Luis Moya	65.80	1	0	4466	1.6	73.9	1.7	13.1	4.9	2.6	1.5	0.6	0.1	75.5	1.7	22.8	0.103	0.531	22.419010	-102.264097
Luis Moya	65.80	3	1	3632	4.9	73.4	3.5	11.1	1.8	2.7	1.4	1.0	0.2	78.3	3.5	18.2	0.094	0.512	22.446694	-102.253753
Luis Moya	65.80	3	2	3908	5.1	73.5	3.6	11.4	1.7	2.3	1.2	1.0	0.2	78.6	3.6	17.8	0.091	0.512	22.446682	-102.253865
T. Der. San Luis Potosí	100.00	1	0	6066	3.0	77.4	3.4	9.7	2.0	2.7	0.8	1.0	0.0	80.4	3.4	16.2	0.084	0.518	22.707341	-102.322046
T. Der. San Luis Potosí	100.00	3	1	6401	2.2	72.6	4.2	9.0	3.1	5.0	2.5	1.1	0.3	74.8	4.2	21.0	0.084	0.606	22.728887	-102.337174
T. Der. San Luis Potosí	100.00	3	2	7799	2.3	72.2	4.2	8.9	3.2	5.0	2.6	1.2	0.4	74.5	4.2	21.3	0.094	0.606	22.729282	-102.337657
T. Izq. Aguascalientes (Cuota)	113.50	1	1	12507	2.1	72.1	2.8	13.3	2.9	3.1	1.6	1.7	0.4	74.2	2.8	23.0	0.081	0.528	22.751376	-102.437977
T. Izq. Aguascalientes (Cuota)	113.50	1	2	12683	2.3	71.3	2.7	13.5	3.0	3.2	1.7	1.8	0.5	73.6	2.7	23.7	0.091	0.528	22.751208	-102.437733
T. Izq. Libramiento De Guadalupe Y Zacatecas	118.20	1	1	26227	3.0	83.4	2.2	6.0	1.5	2.6	0.4	0.7	0.2	86.4	2.2	11.4	0.084	0.521	22.750750	-102.491975
T. Izq. Libramiento De Guadalupe Y Zacatecas	118.20	1	2	25963	3.1	83.2	2.1	6.4	1.4	2.4	0.6	0.6	0.2	86.3	2.1	11.6	0.079	0.521	22.750637	-102.491989
Zacatecas	119.82																			

ZACATECAS

3 CARR: Blvd. Guadalupe - Zacatecas - La Escondida

CLAVE: 00544

RUTA: MEX-045

AÑO: 2025

LUGAR	ESTACION				CLASIFICACION VEHICULAR EN PORCIENTO										COORDENADAS					
	KM	TE	SC	TDPA	M	A	B	C2	C3	T3S2	T3S3	T3S2R4	OTROS	A	B	C	K'	D	LATITUD	LONGITUD
T. Izq. Lib. Guadalupe - Zacatecas (Baja)	0.00	3	1	5236	5.6	85.1	1.2	5.7	0.7	0.9	0.4	0.3	0.1	90.7	1.2	8.1	0.082	0.514	22.754493	-102.505115
T. Izq. Lib. Guadalupe - Zacatecas (Alta)	0.00	3	1	33471	3.0	84.9	3.4	5.3	1.6	0.9	0.6	0.2	0.1	87.9	3.4	8.7	0.087	0.514	22.754228	-102.504782
T. Izq. Lib. Guadalupe - Zacatecas (Alta)	0.00	3	2	30685	2.7	85.1	3.5	5.2	1.5	1.0	0.6	0.3	0.1	87.8	3.5	8.7	0.079	0.514	22.754278	-102.505338
T. Izq. Lib. Guadalupe - Zacatecas (Baja)	0.00	3	2	4399	5.7	84.6	1.3	5.7	0.7	1.0	0.4	0.5	0.1	90.3	1.3	8.4	0.148	0.514	22.754203	-102.505383
X. Av. Universidad	7.70	1	1	47223	2.3	90.4	0.4	4.8	0.9	0.5	0.4	0.2	0.1	92.7	0.4	6.9	0.074	0.508	22.765522	-102.559903
X. Av. Universidad	7.70	1	2	44139	2.5	89.9	0.5	4.6	0.9	0.7	0.5	0.3	0.1	92.4	0.5	7.1	0.073	0.508	22.763946	-102.555752
T. C. Zacatecas - Durango (Baja)	14.50	1	1	6589	1.9	83.3	4.4	7.1	1.0	2.0	0.1	0.2	0.0	85.2	4.4	10.4	0.207	0.652	22.775145	-102.611418
T. C. Zacatecas - Durango (Alta)	14.50	1	1	21387	2.1	91.3	2.0	3.5	0.5	0.1	0.4	0.1	0.0	93.4	2.0	4.6	0.089	0.652	22.775050	-102.611927
T. C. Zacatecas - Durango (Alta)	14.50	1	2	21057	2.3	90.7	2.1	3.5	0.6	0.2	0.4	0.2	0.0	93.0	2.1	4.9	0.091	0.652	22.774866	-102.611771
T. C. Zacatecas - Durango (Baja)	14.50	1	2	629	1.8	83.4	3.8	7.2	1.4	2.2	0.1	0.1	0.0	85.2	3.8	11.0	0.180	0.652	22.774618	-102.610932

4 CARR: Carbonera - T. C. (Ent. Morelos - Saltillo)

CLAVE: 00218

RUTA: MEX-062

AÑO: 2025

LUGAR	ESTACION				CLASIFICACION VEHICULAR EN PORCIENTO										COORDENADAS					
	KM	TE	SC	TDPA	M	A	B	C2	C3	T3S2	T3S3	T3S2R4	OTROS	A	B	C	K'	D	LATITUD	LONGITUD
Carbonera	0.00	3	0	3977	7.6	73.3	1.6	11.6	2.2	1.7	0.7	1.0	0.3	80.9	1.6	17.5	0.080	0.502	23.702617	-100.626167
Cedral	18.00	1	0	6052	9.0	81.8	1.4	3.8	1.1	1.1	0.6	0.8	0.4	90.8	1.4	7.8	0.075	0.530	23.794157	-100.698358
Cedral	18.00	3	0	3979	11.5	70.3	2.3	10.6	1.7	1.6	0.9	0.8	0.3	81.8	2.3	15.9	0.091	0.515	23.827893	-100.735207
Lim. Edos. Term. S. L. P. Ppia. Zac.	79.20																			
T. C. Ent. Morelos - Saltillo	112.00	1	0	1693	2.4	73.3	1.8	16.9	2.5	2.0	0.4	0.6	0.1	75.7	1.8	22.5	0.083	0.553	24.157849	-101.494478

5 CARR: Ent. Cosío - Ent. Cuauhtémoc

CLAVE: 00579

RUTA: MEX-045

AÑO: 2025

LUGAR	ESTACION				CLASIFICACION VEHICULAR EN PORCIENTO										COORDENADAS					
	KM	TE	SC	TDPA	M	A	B	C2	C3	T3S2	T3S3	T3S2R4	OTROS	A	B	C	K'	D	LATITUD	LONGITUD
T. C. Aguascalientes - Zacatecas	57.20	3	0	12353	3.2	59.7	6.4	4.3	2.5	15.2	2.4	5.6	0.7	62.9	6.4	30.7	0.065	0.572	22.392300	-102.305611
Lim. Edos. Term. Ags. Ppia. Zac.	64.00																			
T. C. Ent. Cuauhtémoc - Ent. Osiris Cuota	70.40	1	0	10626	1.4	59.7	6.3	7.6	3.6	14.0	2.5	4.0	0.9	61.1	6.3	32.6	0.062	0.510	22.479648	-102.353014

6 CARR: Ent. La Chicharrona - Cuencamé

CLAVE: 00152

RUTA: MEX-049

AÑO: 2025

LUGAR	ESTACION				CLASIFICACION VEHICULAR EN PORCIENTO										COORDENADAS					
	KM	TE	SC	TDPA	M	A	B	C2	C3	T3S2	T3S3	T3S2R4	OTROS	A	B	C	K'	D	LATITUD	LONGITUD
Ent. La Chicharrona	0.00	3	1	4875	2.2	53.6	6.0	12.5	3.2	14.3	3.4	4.2	0.6	55.8	6.0	38.2	0.082	0.534	23.307663	-102.958721
Ent. La Chicharrona	0.00	3	2	5096	1.9	52.3	6.4	12.4	3.7	13.7	3.9	4.9	0.8	54.2	6.4	39.4	0.072	0.534	23.307672	-102.958911

ZACATECAS

6 CARR: Ent. La Chicharrona - Cuencamé

CLAVE: 00152

RUTA: MEX-049

AÑO: 2025

LUGAR	ESTACION				CLASIFICACION VEHICULAR EN PORCIENTO										COORDENADAS					
	KM	TE	SC	TDPA	M	A	B	C2	C3	T3S2	T3S3	T3S2R4	OTROS	A	B	C	K'	D	LATITUD	LONGITUD
T. Der. Cañitas de Felipe Pescador	25.86	1	1	3704	2.2	55.4	6.4	11.9	3.3	13.9	3.8	2.7	0.4	57.6	6.4	36.0	0.090	0.513	23.506166	-102.959482
T. Der. Cañitas de Felipe Pescador	25.86	1	2	3509	1.9	55.3	6.5	12.3	3.6	13.6	3.8	2.7	0.3	57.2	6.5	36.3	0.083	0.513	23.506162	-102.959679
T. Libramiento de Río Grande Sur	57.00																			
Río Grande	60.00	1	0	8025	2.7	52.6	5.6	12.2	2.7	15.6	4.1	3.7	0.8	55.3	5.6	39.1	0.086	0.520	23.788077	-103.015239
Río Grande	60.00	3	0	6609	3.5	45.7	6.4	16.6	4.3	15.2	4.2	3.3	0.8	49.2	6.4	44.4	0.073	0.547	23.882000	-103.099187
T. Libramiento de Río Grande Norte	67.40																			
T. Der. Nieves	78.00	3	0	6974	3.4	46.6	6.7	17.7	3.7	13.8	5.0	2.5	0.6	50.0	6.7	43.3	0.069	0.509	23.923575	-103.159828
X. C. Juan Aldama - Miguel Auza	124.50	1	0	6528	2.9	45.0	7.6	15.4	3.5	17.4	4.3	3.0	0.9	47.9	7.6	44.5	0.076	0.509	24.268483	-103.398592
X. C. Juan Aldama - Miguel Auza	124.50	3	0	6870	3.6	51.4	5.5	11.0	2.9	14.8	5.7	4.2	0.9	55.0	5.5	39.5	0.071	0.559	24.289710	-103.407425
T. Izq. Miguel Auza	131.20	3	0	6570	3.6	47.4	5.7	15.0	3.5	14.4	5.8	3.7	0.9	51.0	5.7	43.3	0.064	0.515	24.336693	-103.423646
Lim. Edos. Term. Zac. Ppia. Dgo.	134.30																			
T. Der. Santa Clara	144.00	1	0	6275	4.5	38.5	7.6	5.1	3.3	25.5	6.0	8.7	0.8	43.0	7.6	49.4	0.061	0.520	24.435886	-103.486243
T. Der. Santa Clara	144.00	3	0	5179	4.4	37.8	9.2	7.0	3.1	23.7	5.8	8.2	0.8	42.2	9.2	48.6	0.067	0.507	24.445036	-103.492219
T. C. Libramiento Exterior Cuencamé	196.10	1	0	5622	4.7	36.7	5.7	8.8	2.5	27.2	5.4	8.0	1.0	41.4	5.7	52.9	0.070	0.551	24.828058	-103.682337
Cuencamé	199.10	1	0	1387	8.0	77.5	2.5	4.9	3.1	1.8	1.2	0.9	0.1	85.5	2.5	12.0	0.078	0.630	24.852735	-103.693103

7 CARR: Ent. Morelos - Ent. Noria de Gringos

CLAVE: 00544

RUTA: MEX-045

AÑO: 2025

LUGAR	ESTACION				CLASIFICACION VEHICULAR EN PORCIENTO										COORDENADAS					
	KM	TE	SC	TDPA	M	A	B	C2	C3	T3S2	T3S3	T3S2R4	OTROS	A	B	C	K'	D	LATITUD	LONGITUD
Ent. Morelos	0.00																			
T. Der. Lib. Noreste de Zacatecas	0.50	1	1	4864	3.5	68.5	2.4	5.7	3.9	10.0	2.9	2.4	0.7	72.0	2.4	25.6	0.087	0.668	22.862065	-102.627289
T. Der. Lib. Noreste de Zacatecas	0.50	1	2	2233	2.8	82.5	1.7	5.1	1.9	2.6	1.2	1.9	0.3	85.3	1.7	13.0	0.100	0.668	22.861973	-102.626057
T. Der. Lib. Noreste de Zacatecas	0.50	3	0	9032	2.9	67.9	2.5	5.9	4.9	9.1	2.8	3.3	0.7	70.8	2.5	26.7	0.082	0.510	22.858357	-102.636751
Ent. Noria de Gringos	2.20																			

8 CARR: Ent. Morelos - Saltillo

CLAVE: 00149

RUTA: MEX-054

AÑO: 2025

LUGAR	ESTACION				CLASIFICACION VEHICULAR EN PORCIENTO										COORDENADAS					
	KM	TE	SC	TDPA	M	A	B	C2	C3	T3S2	T3S3	T3S2R4	OTROS	A	B	C	K'	D	LATITUD	LONGITUD
T. C. Zacatecas - Durango	0.00	3	1	5000	2.8	67.5	4.4	11.0	2.2	6.7	1.7	2.7	1.0	70.3	4.4	25.3	0.074	0.509	22.868987	-102.619562
T. C. Zacatecas - Durango	0.00	3	2	4816	2.7	67.5	4.4	11.0	2.2	6.7	1.8	2.7	1.0	70.2	4.4	25.4	0.079	0.509	22.869325	-102.619422
T. Der. Sta. Mónica	11.00	1	1	4710	3.1	56.9	4.7	17.6	1.9	11.7	1.5	1.7	0.9	60.0	4.7	35.3	0.067	0.564	22.937463	-102.570189
T. Der. Sta. Mónica	11.00	1	2	5026	3.2	56.1	5.0	17.7	1.9	11.7	1.6	1.8	1.0	59.3	5.0	35.7	0.080	0.564	22.937516	-102.570272
T. Der. Sta. Mónica	11.00	3	1	3648	3.5	46.4	5.5	17.5	4.2	16.6	1.9	3.6	0.8	49.9	5.5	44.6	0.079	0.526	22.950285	-102.559336

ZACATECAS

8 CARR: Ent. Morelos - Saltillo

CLAVE: 00149

RUTA: MEX-054

AÑO: 2025

LUGAR	ESTACION				CLASIFICACION VEHICULAR EN PORCIENTO										COORDENADAS					
	KM	TE	SC	TDPA	M	A	B	C2	C3	T3S2	T3S3	T3S2R4	OTROS	A	B	C	K'	D	LATITUD	LONGITUD
T. Der. Sta. Mónica	11.00	3	2	3765	3.8	45.3	5.6	17.7	4.4	16.7	2.1	3.5	0.9	49.1	5.6	45.3	0.072	0.526	22.950542	-102.559220
T. Izq. Villa de Cos	53.90	1	1	4433	2.3	50.9	4.7	19.2	2.5	15.6	1.9	2.3	0.6	53.2	4.7	42.1	0.058	0.519	23.265104	-102.333159
T. Izq. Villa de Cos	53.90	1	2	4648	2.5	50.5	4.5	19.5	2.3	15.6	2.0	2.4	0.7	53.0	4.5	42.5	0.061	0.519	23.265148	-102.333232
T. Izq. Villa de Cos	53.90	3	1	3841	2.4	49.6	5.1	19.6	2.5	15.8	2.0	2.4	0.6	52.0	5.1	42.9	0.073	0.519	23.276418	-102.324984
T. Izq. Villa de Cos	53.90	3	2	3756	2.2	49.7	5.0	19.8	2.5	15.7	2.0	2.5	0.6	51.9	5.0	43.1	0.073	0.519	23.276471	-102.325066
T. Der. Illescas	58.41	3	1	2854	2.5	51.2	5.2	18.9	2.4	15.4	1.8	2.2	0.4	53.7	5.2	41.1	0.066	0.500	23.291397	-102.314125
T. Der. Illescas	58.41	3	2	2823	2.2	50.8	5.0	19.2	2.3	15.6	1.9	2.6	0.4	53.0	5.0	42.0	0.073	0.500	23.291479	-102.314266
Sierra Vieja	85.50	3	1	2647	2.3	46.8	6.6	20.3	2.3	17.2	1.7	2.2	0.6	49.1	6.6	44.3	0.085	0.559	23.505365	-102.121928
Sierra Vieja	85.50	3	2	2582	1.9	47.0	6.4	20.2	2.1	17.4	2.0	2.4	0.6	48.9	6.4	44.7	0.079	0.559	23.505467	-102.122037
T. Der. Majoma	144.50	3	1	2412	1.6	43.0	6.7	22.6	3.6	14.1	2.7	4.9	0.8	44.6	6.7	48.7	0.067	0.505	23.895466	-101.724592
T. Der. Majoma	144.50	3	2	2461	1.6	42.7	6.4	22.7	3.6	14.3	2.9	5.1	0.7	44.3	6.4	49.3	0.069	0.505	23.895532	-101.724736
T. Der. San Tiburcio	185.25	1	1	2149	2.3	43.4	6.5	22.2	3.6	13.6	2.8	5.2	0.4	45.7	6.5	47.8	0.073	0.549	24.155151	-101.497422
T. Der. San Tiburcio	185.25	1	2	2235	2.3	43.0	6.6	22.6	3.3	13.7	2.9	5.2	0.4	45.3	6.6	48.1	0.068	0.549	24.155231	-101.497545
T. Der. San Tiburcio	185.25	3	1	2663	2.3	44.6	6.7	22.0	3.2	13.0	2.8	5.0	0.4	46.9	6.7	46.4	0.079	0.557	24.162695	-101.491982
T. Der. San Tiburcio	185.25	3	2	2508	2.1	42.9	6.9	22.3	3.2	13.6	3.3	5.2	0.5	45.0	6.9	48.1	0.074	0.557	24.162770	-101.492112
T. Izq. Concepción del Oro	240.00	1	1	3967	2.0	47.4	4.8	24.4	3.0	11.9	1.9	3.8	0.8	49.4	4.8	45.8	0.067	0.504	24.611738	-101.369136
T. Izq. Concepción del Oro	240.00	1	2	4280	2.0	48.4	4.8	24.2	2.9	11.3	2.0	3.6	0.8	50.4	4.8	44.8	0.067	0.504	24.611711	-101.369346
T. Izq. Concepción del Oro	240.00	3	1	4091	2.2	56.2	5.0	16.1	2.8	11.9	1.9	3.4	0.5	58.4	5.0	36.6	0.073	0.513	24.647843	-101.349757
T. Izq. Concepción del Oro	240.00	3	2	4274	2.0	56.7	4.9	15.9	2.9	11.5	2.1	3.4	0.6	58.7	4.9	36.4	0.066	0.513	24.647855	-101.349185
Lim. Edos. Term. Zac. Ppia. Coah.	266.50																			
Agua Nueva	322.00	1	0	7484	3.3	56.7	4.8	5.3	2.5	18.3	2.6	5.5	1.0	60.0	4.8	35.2	0.066	0.724	25.179289	-101.094658
T. Der. La Trinidad	333.00	3	1	10945	0.9	81.3	5.4	7.7	1.7	2.6	0.2	0.1	0.1	82.2	5.4	12.4	0.123	0.688	25.283235	-101.087050
T. Der. La Trinidad	333.00	3	2	11082	0.7	81.3	5.2	7.9	1.8	2.4	0.4	0.2	0.1	82.0	5.2	12.8	0.132	0.688	25.283257	-101.087143
X. C. Libramiento de Saltillo	348.00	1	1	23153	1.6	85.4	3.4	5.9	1.2	1.5	0.3	0.4	0.3	87.0	3.4	9.6	0.077	0.602	25.367127	-101.015697
X. C. Libramiento de Saltillo	348.00	1	2	21448	1.5	86.3	3.3	5.7	1.3	1.3	0.2	0.3	0.1	87.8	3.3	8.9	0.060	0.602	25.367233	-101.015848
Saltillo	354.00	1	1	18724	2.4	91.0	1.4	3.8	0.4	0.3	0.2	0.3	0.2	93.4	1.4	5.2	0.069	0.527	25.388259	-101.006041
Saltillo	354.00	1	2	18135	2.5	90.8	1.3	4.0	0.6	0.4	0.1	0.2	0.1	93.3	1.3	5.4	0.074	0.527	25.388293	-101.006127

9 CARR: Ent. Rivier - San Marcos

CLAVE: 00285

RUTA: MEX-066

AÑO: 2025

LUGAR	ESTACION				CLASIFICACION VEHICULAR EN PORCIENTO										COORDENADAS					
	KM	TE	SC	TDPA	M	A	B	C2	C3	T3S2	T3S3	T3S2R4	OTROS	A	B	C	K'	D	LATITUD	LONGITUD
T. C. Aguascalientes - Zacatecas	0.00	3	1	11912	5.4	83.1	2.3	4.7	2.2	1.3	0.5	0.3	0.2	88.5	2.3	9.2	0.093	0.679	21.961720	-102.283610
T. C. Aguascalientes - Zacatecas	0.00	3	2	11272	5.3	83.5	2.4	4.5	2.1	1.1	0.6	0.3	0.2	88.8	2.4	8.8	0.126	0.679	21.961844	-102.283596
T. Izq. El Tepetate	10.50	3	0	10958	4.3	87.7	1.2	3.8	1.5	0.7	0.4	0.3	0.1	92.0	1.2	6.8	0.091	0.591	21.999438	-102.192606

ZACATECAS

9 CARR: Ent. Rivier - San Marcos

CLAVE: 00285

RUTA: MEX-066

AÑO: 2025

LUGAR	ESTACION				CLASIFICACION VEHICULAR EN PORCIENTO										COORDENADAS					
	KM	TE	SC	TDPA	M	A	B	C2	C3	T3S2	T3S3	T3S2R4	OTROS	A	B	C	K'	D	LATITUD	LONGITUD
T. Der. Jilotepec	23.60	3	0	10557	3.8	87.5	1.8	4.2	1.2	0.7	0.4	0.3	0.1	91.3	1.8	6.9	0.091	0.604	22.058360	-102.096865
Villa Juárez	30.00	3	0	12758	4.3	86.5	2.7	3.5	1.7	0.7	0.4	0.1	0.1	90.8	2.7	6.5	0.100	0.517	22.109064	-102.058214
Ciénega Grande	41.50	1	0	11164	5.1	85.5	2.1	5.1	1.1	0.7	0.1	0.3	0.0	90.6	2.1	7.3	0.078	0.548	22.179471	-102.022740
Ciénega Grande	41.50	3	0	8291	4.9	85.4	2.2	5.3	1.4	0.5	0.1	0.2	0.0	90.3	2.2	7.5	0.099	0.539	22.203136	-102.013431
Lim. Edos. Term. Ags. Ppia. Zac.	45.75																			
San Marcos	55.34	1	0	9142	12.5	78.8	1.8	2.7	1.3	1.6	0.6	0.5	0.2	91.3	1.8	6.9	0.084	0.501	22.276710	-101.956077

10 CARR: Ent. Tesistán - Ent. Malpaso

CLAVE: 00584

RUTA: MEX-023

AÑO: 2025

LUGAR	ESTACION				CLASIFICACION VEHICULAR EN PORCIENTO										COORDENADAS					
	KM	TE	SC	TDPA	M	A	B	C2	C3	T3S2	T3S3	T3S2R4	OTROS	A	B	C	K'	D	LATITUD	LONGITUD
T. C. Guadalajara - Tesistán	0.00	3	1	23828	6.1	86.9	0.5	4.3	0.8	0.5	0.4	0.3	0.2	93.0	0.5	6.5	0.081	0.605	20.796461	-103.459025
T. C. Guadalajara - Tesistán	0.00	3	2	22907	6.5	87.4	0.5	3.6	0.7	0.5	0.3	0.3	0.2	93.9	0.5	5.6	0.082	0.605	20.796473	-103.459111
Lomas de Montechelo	13.50	3	1	2014	6.1	75.1	1.6	10.5	2.3	1.2	3.0	0.2	0.0	81.2	1.6	17.2	0.108	0.556	20.905962	-103.434868
Lomas de Montechelo	13.50	3	2	1982	6.3	75.2	1.5	10.4	2.2	1.3	2.8	0.3	0.0	81.5	1.5	17.0	0.132	0.556	20.905946	-103.434947
Lim. Edos. Term. Jal. Ppia. Zac.	42.00																			
García de La Cadena	64.00	1	0	4218	2.6	80.6	2.3	8.8	1.8	1.3	2.3	0.3	0.0	83.2	2.3	14.5	0.096	0.536	21.193155	-103.464587
Tlaltenango de Sánchez Román	148.00	3	0	7155	3.7	80.1	1.8	8.8	1.5	2.3	1.4	0.3	0.1	83.8	1.8	14.4	0.080	0.551	21.801000	-103.298802
Momax	164.00	3	0	3534	2.7	81.9	1.7	7.7	1.8	1.4	2.1	0.7	0.0	84.6	1.7	13.7	0.081	0.545	21.934874	-103.308145
Lim. Edos. Term. Zac. Ppia. Jal.	171.80																			
Colotlán	188.00	1	0	4023	2.3	80.5	2.1	9.1	1.3	2.1	1.3	0.9	0.4	82.8	2.1	15.1	0.080	0.500	22.089338	-103.272073
Lim. Edos. Term. Jal. Ppia. Zac.	209.90																			
Lim. Edos. Term. Zac. Ppia. Jal.	214.80																			
Lim. Edos. Term. Jal. Ppia. Zac.	223.95																			
Tepetongo	234.00	3	0	5709	3.3	83.1	1.8	7.5	1.0	1.2	1.1	0.9	0.1	86.4	1.8	11.8	0.085	0.506	22.464554	-103.143999
Jerez de García Salinas	260.00	1	1	4279	1.6	86.7	1.0	7.4	0.9	0.9	0.6	0.7	0.2	88.3	1.0	10.7	0.080	0.536	22.600644	-103.017443
Jerez de García Salinas	260.00	1	2	4253	1.5	86.9	1.2	7.3	0.8	0.9	0.6	0.6	0.2	88.4	1.2	10.4	0.080	0.536	22.600693	-103.017509
T. C. Guadalajara - Zacatecas	284.00	1	1	4453	1.3	86.0	2.0	7.0	0.8	1.5	1.2	0.2	0.0	87.3	2.0	10.7	0.082	0.501	22.617225	-102.785272
T. C. Guadalajara - Zacatecas	284.00	1	2	4455	1.3	86.2	1.9	6.9	1.0	1.3	1.1	0.3	0.0	87.5	1.9	10.6	0.083	0.501	22.617310	-102.785245

11 CARR: Fresnillo - Valparaíso

CLAVE: 32547

RUTA: MEX-044

AÑO: 2025

LUGAR	ESTACION				CLASIFICACION VEHICULAR EN PORCIENTO										COORDENADAS					
	KM	TE	SC	TDPA	M	A	B	C2	C3	T3S2	T3S3	T3S2R4	OTROS	A	B	C	K'	D	LATITUD	LONGITUD
Fresnillo	0.00	3	0	9980	3.3	74.0	2.5	11.8	2.9	3.7	1.1	0.6	0.1	77.3	2.5	20.2	0.083	0.534	23.174020	-102.919778

ZACATECAS

11 CARR: Fresnillo - Valparaíso

CLAVE: 32547

RUTA: MEX-044

AÑO: 2025

LUGAR	ESTACION				CLASIFICACION VEHICULAR EN PORCIENTO										COORDENADAS					
	KM	TE	SC	TDPA	M	A	B	C2	C3	T3S2	T3S3	T3S2R4	OTROS	A	B	C	K'	D	LATITUD	LONGITUD
T. Izq. Guanajuato	24.50	1	0	2399	2.3	77.4	2.6	14.1	2.1	0.9	0.4	0.2	0.0	79.7	2.6	17.7	0.097	0.517	23.106581	-103.080279
T. Izq. Sombreretillo	45.00	3	0	2098	2.7	77.4	1.9	14.5	1.9	1.0	0.6	0.0	0.0	80.1	1.9	18.0	0.079	0.594	22.997119	-103.213796
T. Izq. San José de Llanetes	55.00	3	0	1676	2.8	74.0	2.5	12.7	3.0	3.6	1.4	0.0	0.0	76.8	2.5	20.7	0.080	0.597	22.915509	-103.301835
T. Izq. Lobatos	71.00	3	0	2708	2.7	76.2	2.1	13.2	2.0	3.0	0.8	0.0	0.0	78.9	2.1	19.0	0.088	0.527	22.826770	-103.438958
Valparaíso	90.00	1	0	3046	1.1	77.3	2.3	16.4	1.6	0.9	0.4	0.0	0.0	78.4	2.3	19.3	0.089	0.561	22.797749	-103.542081

12 CARR: Guadalajara - Zacatecas

CLAVE: 00150

RUTA: MEX-054

AÑO: 2025

LUGAR	ESTACION				CLASIFICACION VEHICULAR EN PORCIENTO										COORDENADAS					
	KM	TE	SC	TDPA	M	A	B	C2	C3	T3S2	T3S3	T3S2R4	OTROS	A	B	C	K'	D	LATITUD	LONGITUD
Guadalajara	0.00																			
X. Periférico de Guadalajara	6.19	3	1	6126	8.4	84.1	1.3	3.0	1.4	1.0	0.4	0.2	0.2	92.5	1.3	6.2	0.094	0.518	20.768913	-103.340008
X. Periférico de Guadalajara	6.19	3	2	6542	8.4	84.3	1.0	2.9	1.4	1.0	0.4	0.3	0.3	92.7	1.0	6.3	0.085	0.518	20.768895	-103.340099
T. Izq. San Francisco de Ixcatán	25.74	1	0	4390	4.9	82.2	1.3	7.8	1.5	1.4	0.4	0.4	0.1	87.1	1.3	11.6	0.116	0.733	20.850406	-103.339541
T. Der. Ixtlahuacán del Río	49.46	3	0	6288	6.2	79.7	1.7	8.8	1.5	1.3	0.3	0.4	0.1	85.9	1.7	12.4	0.079	0.524	20.871146	-103.236789
Lim. Edos. Term. Jal. Ppia. Zac.	76.49																			
T. Izq. Moyahua	106.43	1	0	2190	3.5	76.4	3.3	8.7	2.6	2.7	2.2	0.6	0.0	79.9	3.3	16.8	0.074	0.648	21.251194	-103.161737
Apozol	129.28	1	0	4251	3.6	77.8	2.1	8.4	1.8	3.6	1.7	0.9	0.1	81.4	2.1	16.5	0.092	0.625	21.448575	-103.093483
Jalpa	159.39	1	0	5735	2.1	81.7	2.5	7.3	1.8	1.9	0.9	1.5	0.3	83.8	2.5	13.7	0.094	0.623	21.617393	-103.003633
Tabasco	189.40	1	0	3293	1.6	79.9	2.6	8.3	1.9	3.4	0.9	1.3	0.1	81.5	2.6	15.9	0.089	0.548	21.843650	-102.933634
Tabasco	189.40	3	0	4076	2.3	79.8	2.4	9.3	1.9	2.2	1.3	0.7	0.1	82.1	2.4	15.5	0.088	0.527	21.886372	-102.906340
Villanueva	255.70	3	0	3976	1.7	84.7	2.5	5.0	2.0	1.9	1.4	0.7	0.1	86.4	2.5	11.1	0.088	0.523	22.375741	-102.881676
T. Izq. Jerez de García Salinas	289.13	1	1	2396	1.3	83.6	2.3	6.8	1.8	2.9	0.9	0.3	0.1	84.9	2.3	12.8	0.087	0.536	22.601371	-102.764340
T. Izq. Jerez de García Salinas	289.13	1	2	2497	1.4	83.2	2.2	7.0	1.4	3.2	1.0	0.5	0.1	84.6	2.2	13.2	0.087	0.536	22.601453	-102.764396
T. Izq. Jerez de García Salinas	289.13	3	1	5087	1.8	85.7	2.4	4.3	1.9	1.8	1.2	0.5	0.4	87.5	2.4	10.1	0.101	0.576	22.625424	-102.750956
T. Izq. Jerez de García Salinas	289.13	3	2	5140	1.7	86.6	2.1	4.0	1.7	2.0	1.2	0.4	0.3	88.3	2.1	9.6	0.096	0.576	22.625469	-102.751038
T. C. Zacatecas - Durango	311.83	1	1	15054	2.5	82.1	3.2	7.0	2.0	1.4	1.1	0.6	0.1	84.6	3.2	12.2	0.095	0.534	22.771700	-102.630524
T. C. Zacatecas - Durango	311.83	1	2	16064	2.5	81.5	3.3	7.2	2.4	1.4	1.0	0.5	0.2	84.0	3.3	12.7	0.094	0.534	22.771815	-102.630593

13 CARR: Jerez - Fresnillo

CLAVE: 32542

RUTA: MEX-023

AÑO: 2025

LUGAR	ESTACION				CLASIFICACION VEHICULAR EN PORCIENTO										COORDENADAS					
	KM	TE	SC	TDPA	M	A	B	C2	C3	T3S2	T3S3	T3S2R4	OTROS	A	B	C	K'	D	LATITUD	LONGITUD
Jerez	0.00	3	0	2310	2.9	84.4	2.0	6.6	1.5	1.9	0.6	0.1	0.0	87.3	2.0	10.7	0.089	0.590	22.682142	-103.016392
T. C. Ent. Fresnillo - Valparaíso	60.00	1	0	4926	3.7	80.8	1.3	7.8	2.4	2.7	1.2	0.1	0.0	84.5	1.3	14.2	0.083	0.570	23.157531	-102.882293

ZACATECAS

14 CARR: Libramiento de Guadalupe - Zacatecas

CLAVE: 32582

RUTA: MEX-045

AÑO: 2025

LUGAR	ESTACION				CLASIFICACION VEHICULAR EN PORCIENTO										COORDENADAS					
	KM	TE	SC	TDPA	M	A	B	C2	C3	T3S2	T3S3	T3S2R4	OTROS	A	B	C	K'	D	LATITUD	LONGITUD
T. C. Aguascalientes - Zacatecas (Alta)	0.00	3	1	15163	1.9	75.2	3.5	10.0	2.7	3.2	2.5	0.8	0.2	77.1	3.5	19.4	0.084	0.511	22.740979	-102.503903
T. C. Aguascalientes - Zacatecas (Baja)	0.00	3	1	6676	4.6	83.3	0.8	7.5	1.2	1.4	0.7	0.4	0.1	87.9	0.8	11.3	0.090	0.511	22.741116	-102.503988
T. C. Aguascalientes - Zacatecas (Baja)	0.00	3	2	6236	4.9	83.0	0.7	7.2	1.4	1.3	0.9	0.5	0.1	87.9	0.7	11.4	0.086	0.511	22.739527	-102.507099
T. C. Aguascalientes - Zacatecas (Alta)	0.00	3	2	15141	2.1	74.8	3.3	9.7	2.9	3.0	2.7	1.2	0.3	76.9	3.3	19.8	0.091	0.511	22.739968	-102.506663
Av. Jesús Reyes Heróles	9.80	1	1	11349	3.6	85.4	2.5	4.7	1.6	1.2	0.5	0.4	0.1	89.0	2.5	8.5	0.076	0.578	22.755873	-102.566536
Av. Jesús Reyes Heróles	9.80	1	2	11663	3.4	84.8	2.7	4.5	1.8	1.4	0.8	0.4	0.2	88.2	2.7	9.1	0.091	0.578	22.755762	-102.566540
X. C. Cieneguillas - Zacatecas (Alta)	13.00	3	1	17795	3.8	79.6	2.7	4.1	2.9	3.7	1.4	1.3	0.5	83.4	2.7	13.9	0.096	0.646	22.757054	-102.598037
X. C. Cieneguillas - Zacatecas (Alta)	13.00	3	2	18517	3.9	80.9	2.9	3.9	2.5	3.4	1.2	1.1	0.2	84.8	2.9	12.3	0.108	0.646	22.756977	-102.598058
T. C. Zacatecas - Durango	17.50	1	1	12648	3.4	78.1	2.8	5.9	2.0	4.3	2.2	1.1	0.2	81.5	2.8	15.7	0.131	0.699	22.773105	-102.618305
T. C. Zacatecas - Durango	17.50	1	2	14087	3.2	78.9	2.5	5.7	2.3	4.1	1.9	1.1	0.3	82.1	2.5	15.4	0.105	0.699	22.773017	-102.618349

15 CARR: Libramiento de Río Grande

CLAVE:

RUTA: MEX-049

AÑO: 2025

LUGAR	ESTACION				CLASIFICACION VEHICULAR EN PORCIENTO										COORDENADAS					
	KM	TE	SC	TDPA	M	A	B	C2	C3	T3S2	T3S3	T3S2R4	OTROS	A	B	C	K'	D	LATITUD	LONGITUD
T. C. La Chicharrona - Cuencamé (Sur)	55.90	3	0	6668	3.5	47.4	4.8	10.7	5.3	16.6	5.1	5.8	0.8	50.9	4.8	44.3	0.071	0.513	23.806993	-103.013589
T. C. La Chicharrona - Cuencamé (Norte)	68.59	1	0	7229	3.5	47.9	4.5	12.4	3.7	18.8	3.7	4.7	0.8	51.4	4.5	44.1	0.068	0.526	23.862313	-103.067315

16 CARR: Libramiento de Sombrerete

CLAVE:

RUTA: MEX-045

AÑO: 2025

LUGAR	ESTACION				CLASIFICACION VEHICULAR EN PORCIENTO										COORDENADAS					
	KM	TE	SC	TDPA	M	A	B	C2	C3	T3S2	T3S3	T3S2R4	OTROS	A	B	C	K'	D	LATITUD	LONGITUD
T. C. Zacatecas - Durango Oriente	158.00																			
T. C. Zacatecas - Durango Poniente	163.50	1	0	4121	2.3	72.0	3.0	6.1	3.2	9.9	1.6	1.7	0.2	74.3	3.0	22.7	0.071	0.537	23.656085	-103.650450

17 CARR: Libramiento de Tabasco

CLAVE:

RUTA: MEX-054

AÑO: 2025

LUGAR	ESTACION				CLASIFICACION VEHICULAR EN PORCIENTO										COORDENADAS					
	KM	TE	SC	TDPA	M	A	B	C2	C3	T3S2	T3S3	T3S2R4	OTROS	A	B	C	K'	D	LATITUD	LONGITUD
T. C. Guadalajara - Zacatecas Sur	185.00																			
T. C. Guadalajara - Zacatecas Norte	190.10	1	0	3751	2.1	75.8	1.8	12.3	2.6	2.8	0.9	1.5	0.2	77.9	1.8	20.3	0.077	0.524	21.878514	-102.911086

ZACATECAS

18 CARR: Providencia - Luis Moya

CLAVE: 00112

RUTA: MEX-071

AÑO: 2025

LUGAR	ESTACION				CLASIFICACION VEHICULAR EN PORCIENTO										COORDENADAS					
	KM	TE	SC	TDPA	M	A	B	C2	C3	T3S2	T3S3	T3S2R4	OTROS	A	B	C	K'	D	LATITUD	LONGITUD
T. C. Aguascalientes - Zacatecas	0.00	3	0	5755	5.7	75.5	2.0	4.1	3.2	1.9	3.0	3.8	0.8	81.2	2.0	16.8	0.066	0.573	22.060780	-102.273937
T. Izq. Pabellón de Arteaga	12.10	1	0	6188	4.1	78.8	2.3	4.2	2.7	2.0	2.2	3.0	0.7	82.9	2.3	14.8	0.082	0.526	22.144803	-102.251387
T. Der. Villa Juárez	14.90	3	0	7527	4.2	81.4	3.2	4.6	1.2	1.4	1.1	2.4	0.5	85.6	3.2	11.2	0.074	0.535	22.177249	-102.245359
X. C. Rincón de Romos - Ciénega Grande	21.22	3	0	6885	4.5	82.5	1.8	3.6	2.6	1.6	1.6	1.5	0.3	87.0	1.8	11.2	0.077	0.572	22.230939	-102.241393
X. C. La Punta - Mesillas	30.35	3	0	3768	5.6	81.9	1.5	3.2	1.4	2.5	2.5	1.2	0.2	87.5	1.5	11.0	0.080	0.550	22.317015	-102.233800
San Jacinto	34.25	3	0	2654	9.1	75.2	2.7	4.3	1.4	2.6	2.5	1.8	0.4	84.3	2.7	13.0	0.080	0.547	22.352981	-102.232515
Lim. Edos. Term. Ags. Ppia. Zac.	37.50																			
Luis Moya	43.52	1	0	4217	2.4	73.1	1.0	15.4	2.2	2.4	1.8	1.5	0.2	75.5	1.0	23.5	0.082	0.501	22.423553	-102.246320

19 CARR: Ramal a Aeropuerto Zacatecas

CLAVE: 32546

RUTA: MEX-045

AÑO: 2025

LUGAR	ESTACION				CLASIFICACION VEHICULAR EN PORCIENTO										COORDENADAS					
	KM	TE	SC	TDPA	M	A	B	C2	C3	T3S2	T3S3	T3S2R4	OTROS	A	B	C	K'	D	LATITUD	LONGITUD
T. C. Zacatecas - Durango	0.00	3	1	2468	4.2	83.9	0.9	8.1	1.1	1.3	0.2	0.3	0.0	88.1	0.9	11.0	0.171	0.629	22.909138	-102.674444
T. C. Zacatecas - Durango	0.00	3	2	2286	7.0	80.7	0.7	8.5	1.4	1.2	0.2	0.3	0.0	87.7	0.7	11.6	0.143	0.629	22.909101	-102.674362
Aeropuerto	1.95																			

20 CARR: Ramal a Concepción del Oro

CLAVE: 32565

RUTA: MEX-054

AÑO: 2025

LUGAR	ESTACION				CLASIFICACION VEHICULAR EN PORCIENTO										COORDENADAS					
	KM	TE	SC	TDPA	M	A	B	C2	C3	T3S2	T3S3	T3S2R4	OTROS	A	B	C	K'	D	LATITUD	LONGITUD
T. C. Ent. Morelos - Saltillo	0.00	3	0	7852	6.5	56.7	4.2	11.4	6.8	9.3	2.5	2.1	0.5	63.2	4.2	32.6	0.088	0.512	24.620303	-101.403952
Concepción del Oro	3.20																			

21 CARR: Ramal a Francisco Murguía (Nieves)

CLAVE: 32541

RUTA: MEX-049

AÑO: 2025

LUGAR	ESTACION				CLASIFICACION VEHICULAR EN PORCIENTO										COORDENADAS					
	KM	TE	SC	TDPA	M	A	B	C2	C3	T3S2	T3S3	T3S2R4	OTROS	A	B	C	K'	D	LATITUD	LONGITUD
T. C. Ent. La Chicharrona - Cuencamé	0.00	3	0	1578	3.8	76.5	1.4	15.5	0.7	1.0	0.8	0.3	0.0	80.3	1.4	18.3	0.127	0.502	23.924838	-103.155766
Francisco Murguía (Nieves)	17.40																			

ZACATECAS

22 CARR: Ramal a Gral. Pánfilo Natera

CLAVE: 32559

RUTA: MEX-049

AÑO: 2025

LUGAR	ESTACION				CLASIFICACION VEHICULAR EN PORCIENTO										COORDENADAS					
	KM	TE	SC	TDPA	M	A	B	C2	C3	T3S2	T3S3	T3S2R4	OTROS	A	B	C	K'	D	LATITUD	LONGITUD
T. C. San Luis Potosí - Ent. Arcinas	0.00	3	1	2268	4.0	76.6	2.0	13.2	2.9	1.1	0.2	0.0	0.0	80.6	2.0	17.4	0.098	0.544	22.674442	-102.107660
T. C. San Luis Potosí - Ent. Arcinas	0.00	3	2	2229	4.1	76.0	2.2	13.2	3.1	1.0	0.4	0.0	0.0	80.1	2.2	17.7	0.114	0.544	22.674425	-102.107570
Gral. Pánfilo Natera	1.50																			

23 CARR: Ramal a Ruinas de Chicomostoc

CLAVE: 00544

RUTA: MEX-045

AÑO: 2025

LUGAR	ESTACION				CLASIFICACION VEHICULAR EN PORCIENTO										COORDENADAS					
	KM	TE	SC	TDPA	M	A	B	C2	C3	T3S2	T3S3	T3S2R4	OTROS	A	B	C	K'	D	LATITUD	LONGITUD
T. C. Guadalajara - Zacatecas	0.00	3	0	82	13.3	75.5	4.9	5.5	0.8	0.0	0.0	0.0	0.0	88.8	4.9	6.3	0.244	0.650	22.457077	-102.827686
Ruinas de Chicomostoc	2.20																			

24 CARR: Ramal a San Martín

CLAVE: 00544

RUTA: MEX-045

AÑO: 2025

LUGAR	ESTACION				CLASIFICACION VEHICULAR EN PORCIENTO										COORDENADAS					
	KM	TE	SC	TDPA	M	A	B	C2	C3	T3S2	T3S3	T3S2R4	OTROS	A	B	C	K'	D	LATITUD	LONGITUD
T. C. Zacatecas - Durango	0.00	3	0	1802	2.5	79.7	1.0	10.7	4.0	1.3	0.6	0.2	0.0	82.2	1.0	16.8	0.089	0.713	23.689944	-103.720426
San Martín	4.00																			

25 CARR: Ramal a Villa de Cos

CLAVE: 32564

RUTA: MEX-054

AÑO: 2025

LUGAR	ESTACION				CLASIFICACION VEHICULAR EN PORCIENTO										COORDENADAS					
	KM	TE	SC	TDPA	M	A	B	C2	C3	T3S2	T3S3	T3S2R4	OTROS	A	B	C	K'	D	LATITUD	LONGITUD
T. C. Ent. Morelos - Saltillo	0.00	3	1	2458	4.6	87.6	1.0	4.8	1.0	0.8	0.2	0.0	0.0	92.2	1.0	6.8	0.100	0.503	23.272873	-102.332290
T. C. Ent. Morelos - Saltillo	0.00	3	2	2267	4.3	87.5	1.0	5.1	1.1	0.7	0.3	0.0	0.0	91.8	1.0	7.2	0.119	0.503	23.272828	-102.332367
Villa de Cos	3.30	1	1	3981	4.6	84.0	0.8	8.0	1.0	1.1	0.5	0.0	0.0	88.6	0.8	10.6	0.089	0.527	23.288746	-102.343018
Villa de Cos	3.30	1	2	3809	4.6	83.9	0.8	8.5	0.8	1.0	0.4	0.0	0.0	88.5	0.8	10.7	0.091	0.527	23.288668	-102.343043

26 CARR: San Luis Potosí - Ent. Arcinas

CLAVE: 00134

RUTA: MEX-049

AÑO: 2025

LUGAR	ESTACION				CLASIFICACION VEHICULAR EN PORCIENTO										COORDENADAS					
	KM	TE	SC	TDPA	M	A	B	C2	C3	T3S2	T3S3	T3S2R4	OTROS	A	B	C	K'	D	LATITUD	LONGITUD
T. C. San Luis Potosí - Matehuala	0.00																			
T. Izq. Periférico de San Luis Potosí	9.35	3	1	12919	5.3	82.9	2.2	4.1	1.4	1.8	0.9	1.0	0.4	88.2	2.2	9.6	0.086	0.525	22.206628	-101.031928
T. Izq. Periférico de San Luis Potosí	9.35	3	2	12442	5.4	83.1	2.1	4.2	1.3	1.6	0.8	1.0	0.5	88.5	2.1	9.4	0.083	0.525	22.206546	-101.032035
Mexquitic	22.50	1	1	6936	9.1	67.2	2.6	4.5	2.1	8.3	2.3	3.2	0.7	76.3	2.6	21.1	0.098	0.528	22.247910	-101.102659

ZACATECAS

26 CARR: San Luis Potosí - Ent. Arcinas

CLAVE: 00134

RUTA: MEX-049

AÑO: 2025

LUGAR	ESTACION				CLASIFICACION VEHICULAR EN PORCIENTO										COORDENADAS					
	KM	TE	SC	TDPA	M	A	B	C2	C3	T3S2	T3S3	T3S2R4	OTROS	A	B	C	K'	D	LATITUD	LONGITUD
Mexquitic	22.50	1	2	6658	9.2	67.4	2.6	4.4	1.8	8.4	2.2	3.1	0.9	76.6	2.6	20.8	0.113	0.528	22.249038	-101.105047
Mexquitic	22.50	3	1	6661	5.3	67.5	3.7	4.7	2.0	10.1	2.4	3.3	1.0	72.8	3.7	23.5	0.072	0.600	22.256584	-101.125963
Mexquitic	22.50	3	2	6561	5.1	67.4	3.5	4.8	2.1	10.2	2.4	3.5	1.0	72.5	3.5	24.0	0.071	0.600	22.256523	-101.126019
T. Der. Charcas	30.90	1	1	7551	4.2	67.5	4.4	5.7	2.0	9.3	2.1	3.9	0.9	71.7	4.4	23.9	0.081	0.534	22.308335	-101.156003
T. Der. Charcas	30.90	1	2	7390	4.3	67.9	4.2	5.5	2.1	9.2	2.0	3.8	1.0	72.2	4.2	23.6	0.089	0.534	22.308241	-101.156080
T. Der. Charcas	30.90	3	1	5880	4.8	68.1	3.7	4.4	2.5	8.6	2.9	4.1	0.9	72.9	3.7	23.4	0.078	0.534	22.318271	-101.170307
T. Der. Charcas	30.90	3	2	5270	4.8	67.4	3.7	4.6	2.6	8.6	3.2	4.3	0.8	72.2	3.7	24.1	0.086	0.534	22.318207	-101.170357
Lim. Edos. Term. S. L. P. Ppia. Zac.	55.13																			
Lim. Edos. Term. Zac. Ppia. S. L. P.	89.30																			
T. Der. Salinas	99.00	1	1	3539	5.6	59.4	5.5	4.2	2.6	12.5	4.0	5.2	1.0	65.0	5.5	29.5	0.078	0.513	22.603035	-101.706036
T. Der. Salinas	99.00	1	2	3847	5.8	58.6	5.5	4.3	2.6	13.0	3.9	5.4	0.9	64.4	5.5	30.1	0.089	0.513	22.602930	-101.706095
T. Der. Salinas	99.00	3	1	3977	5.9	60.2	4.6	4.9	2.2	13.0	3.2	5.2	0.8	66.1	4.6	29.3	0.088	0.595	22.619302	-101.737911
T. Der. Salinas	99.00	3	2	4643	5.8	60.0	4.9	5.1	2.0	13.0	3.3	5.2	0.7	65.8	4.9	29.3	0.095	0.595	22.619231	-101.738789
Lim. Edos. Term. S. L. P. Ppia. Zac.	122.47																			
T. Izq. Pánfilo Natera	139.00	1	1	4048	4.0	53.5	4.9	13.9	2.9	11.4	3.6	4.9	0.9	57.5	4.9	37.6	0.078	0.529	22.678794	-102.096585
T. Izq. Pánfilo Natera	139.00	1	2	4127	3.5	53.8	4.8	14.0	2.9	11.5	3.6	5.1	0.8	57.3	4.8	37.9	0.078	0.529	22.678613	-102.096611
Ent. Arcinas	162.98	1	1	4649	2.6	57.1	6.9	13.2	3.4	8.1	3.9	3.9	0.9	59.7	6.9	33.4	0.074	0.560	22.719950	-102.325293
Ent. Arcinas	162.98	1	2	4813	2.4	56.8	6.8	13.3	3.7	8.1	4.2	3.7	1.0	59.2	6.8	34.0	0.075	0.560	22.719773	-102.325350

27 CARR: San Luis Potosí - Lagos de Moreno

CLAVE: 00133

RUTA: MEX-070-080

AÑO: 2025

LUGAR	ESTACION				CLASIFICACION VEHICULAR EN PORCIENTO										COORDENADAS					
	KM	TE	SC	TDPA	M	A	B	C2	C3	T3S2	T3S3	T3S2R4	OTROS	A	B	C	K'	D	LATITUD	LONGITUD
San Luis Potosí	0.00	3	1	18832	2.7	93.4	0.4	1.7	0.6	0.4	0.3	0.2	0.3	96.1	0.4	3.5	0.087	0.535	22.133833	-101.031022
San Luis Potosí	0.00	3	2	19397	2.9	93.4	0.3	1.6	0.4	0.2	0.5	0.4	0.3	96.3	0.3	3.4	0.092	0.535	22.133762	-101.030904
X. Periférico de San Luis Potosí	8.41	3	0	13085	4.1	82.6	1.5	4.8	2.0	2.8	1.3	0.5	0.4	86.7	1.5	11.8	0.078	0.648	22.127522	-101.045546
El Tepetate	41.90	1	0	8072	3.4	64.4	4.0	4.7	2.6	11.5	3.6	4.8	1.0	67.8	4.0	28.2	0.064	0.588	22.025621	-101.224392
El Tepetate	41.90	3	0	8827	3.6	65.6	3.7	4.1	2.5	10.2	2.8	6.5	1.0	69.2	3.7	27.1	0.067	0.557	22.004438	-101.253863
Villa de Arriaga	61.90	3	0	5026	3.2	67.2	4.8	6.7	2.7	9.1	3.5	2.2	0.6	70.4	4.8	24.8	0.064	0.534	21.896940	-101.408368
Lim. Edos. Term. S. L. P. Ppia. Zac.	70.23																			
Lim. Edos. Term. Zac. Ppia. Jal.	82.94																			
Ojuelos de Jalisco	83.20	1	0	5827	4.6	73.9	4.2	5.8	2.1	5.4	2.2	1.6	0.2	78.5	4.2	17.3	0.081	0.504	21.875475	-101.572926
Ojuelos de Jalisco	83.20	3	0	2749	6.6	73.9	3.5	4.7	1.6	5.1	2.5	1.8	0.3	80.5	3.5	16.0	0.082	0.564	21.854309	-101.593879
X. C. Lagos de Moreno - San Luis Potosí (Cuota)	140.00	1	0	4600	7.7	72.5	2.9	5.9	2.0	4.4	2.2	2.2	0.2	80.2	2.9	16.9	0.082	0.546	21.446097	-101.808366
X. C. León - Aguascalientes	146.90	1	1	7986	7.2	62.2	4.6	5.4	2.6	10.6	1.7	5.3	0.4	69.4	4.6	26.0	0.114	0.631	21.375725	-101.894433

ZACATECAS

27 CARR: San Luis Potosi - Lagos de Moreno

CLAVE: 00133

RUTA: MEX-070-080

AÑO: 2025

LUGAR	ESTACION				CLASIFICACION VEHICULAR EN PORCIENTO										COORDENADAS					
	KM	TE	SC	TDPA	M	A	B	C2	C3	T3S2	T3S3	T3S2R4	OTROS	A	B	C	K'	D	LATITUD	LONGITUD
X. C. León - Aguascalientes	146.90	1	2	8956	7.3	62.2	4.5	5.5	2.7	10.5	1.6	5.2	0.5	69.5	4.5	26.0	0.090	0.631	21.375635	-101.894360
Lagos de Moreno	150.00																			

28 CARR: Zacatecas - Durango

CLAVE: 00544

RUTA: MEX-045

AÑO: 2025

LUGAR	ESTACION				CLASIFICACION VEHICULAR EN PORCIENTO										COORDENADAS					
	KM	TE	SC	TDPA	M	A	B	C2	C3	T3S2	T3S3	T3S2R4	OTROS	A	B	C	K'	D	LATITUD	LONGITUD
Zacatecas	0.00																			
T. Izq. Guadalajara	6.40	3	1	16017	1.7	78.2	3.6	7.5	4.2	3.5	0.4	0.7	0.2	79.9	3.6	16.5	0.096	0.536	22.782591	-102.627200
T. Izq. Guadalajara	6.40	3	2	17239	1.5	79.0	3.4	7.4	4.2	3.6	0.3	0.5	0.1	80.5	3.4	16.1	0.086	0.536	22.782610	-102.627295
T. Der. Saltillo (T. Morelos)	15.00	1	1	14931	1.1	82.9	3.0	5.4	1.4	4.3	0.8	0.9	0.2	84.0	3.0	13.0	0.090	0.594	22.850415	-102.623967
T. Der. Saltillo (T. Morelos)	15.00	1	2	16583	1.3	85.0	3.1	3.4	1.2	3.9	1.1	0.8	0.2	86.3	3.1	10.6	0.082	0.594	22.851249	-102.643950
T. Der. Saltillo (T. Morelos)	15.00	3	1	15121	1.9	71.0	4.8	9.2	3.4	4.6	1.8	2.7	0.6	72.9	4.8	22.3	0.092	0.615	22.877587	-102.638987
T. Der. Saltillo (T. Morelos)	15.00	3	2	15744	1.7	71.6	4.8	9.0	3.2	4.3	2.0	2.9	0.5	73.3	4.8	21.9	0.109	0.615	22.870456	-102.651915
T. C. Libramiento Noreste de Zacatecas (Cuota)	20.50																			
T. Libramiento de Víctor Rosales	26.20																			
Víctor Rosales	28.00	1	1	14225	1.5	74.9	3.7	5.5	2.8	7.5	2.2	1.6	0.3	76.4	3.7	19.9	0.081	0.576	22.919344	-102.676059
Víctor Rosales	28.00	1	2	14868	1.7	75.2	3.5	5.0	2.7	6.8	2.0	2.5	0.6	76.9	3.5	19.6	0.091	0.576	22.919222	-102.676303
T. Der. Facultad de Veterinaria	32.30	1	1	9513	1.6	66.1	4.5	9.5	2.5	11.1	2.2	1.9	0.6	67.7	4.5	27.8	0.081	0.516	22.975081	-102.722285
T. Der. Facultad de Veterinaria	32.30	1	2	8618	1.4	66.7	4.4	9.4	2.3	11.0	2.3	2.0	0.5	68.1	4.4	27.5	0.089	0.516	22.975026	-102.722374
Gral. Enrique Estrada	34.60	3	1	10312	1.9	65.4	4.7	9.5	2.2	12.0	2.5	1.5	0.3	67.3	4.7	28.0	0.079	0.528	23.012014	-102.751609
Gral. Enrique Estrada	34.60	3	2	9570	1.7	66.8	4.2	9.3	2.1	11.6	2.1	1.6	0.6	68.5	4.2	27.3	0.080	0.528	23.011962	-102.751883
T. Libramiento de Víctor Rosales	35.90																			
T. Libramiento de Fresnillo Sur	49.30																			
Fresnillo	58.50	1	1	10622	1.5	78.0	3.2	8.9	2.8	3.0	2.2	0.3	0.1	79.5	3.2	17.3	0.089	0.541	23.160446	-102.852383
Fresnillo	58.50	1	2	10235	1.6	77.4	3.3	8.7	3.1	3.0	2.5	0.3	0.1	79.0	3.3	17.7	0.088	0.541	23.160171	-102.852360
T. C. Libramiento de Fresnillo (Cuota) Norte	66.40	1	1	5393	2.6	71.6	5.2	10.1	6.7	1.9	1.2	0.6	0.1	74.2	5.2	20.6	0.096	0.502	23.236462	-102.915577
T. C. Libramiento de Fresnillo (Cuota) Norte	66.40	1	2	5847	2.6	72.3	4.9	9.9	6.4	1.9	1.3	0.6	0.1	74.9	4.9	20.2	0.085	0.502	23.236410	-102.915681
Ent. La Chicharrona	74.30	1	1	8398	2.3	64.6	3.9	10.7	3.0	8.6	3.5	2.6	0.8	66.9	3.9	29.2	0.105	0.538	23.288732	-102.951665
Ent. La Chicharrona	74.30	1	2	8560	2.3	64.7	4.3	11.0	2.9	8.7	3.3	2.1	0.7	67.0	4.3	28.7	0.089	0.538	23.288735	-102.952005
Ent. La Chicharrona	74.30	3	0	6332	2.1	64.6	5.8	17.1	2.9	4.5	2.0	0.8	0.2	66.7	5.8	27.5	0.087	0.535	23.307808	-102.964732
T. Der. Sain Alto	121.00	3	0	4437	1.9	66.7	5.1	14.7	2.6	5.0	2.5	1.2	0.3	68.6	5.1	26.3	0.081	0.501	23.580906	-103.273915
T. Izq. Sombrerete (2º Acceso)	161.50	3	0	5188	2.1	71.6	4.1	11.1	2.4	4.8	2.5	1.2	0.2	73.7	4.1	22.2	0.098	0.510	23.646813	-103.651493
T. C. Libramiento de Sombrerete	165.00	3	0	5508	2.4	71.1	4.8	13.2	2.0	3.2	1.7	1.2	0.4	73.5	4.8	21.7	0.084	0.504	23.660675	-103.668855
Lim. Edos. Term. Zac. Ppia. Dgo.	190.08																			

ZACATECAS

28 CARR: Zacatecas - Durango

CLAVE: 00544

RUTA: MEX-045

AÑO: 2025

LUGAR	ESTACION				CLASIFICACION VEHICULAR EN PORCIENTO														COORDENADAS	
	KM	TE	SC	TDPA	M	A	B	C2	C3	T3S2	T3S3	T3S2R4	OTROS	A	B	C	K'	D	LATITUD	LONGITUD
X. C. Súchil - Villa Unión	206.98	1	0	3811	3.9	72.5	5.7	4.0	2.0	5.9	2.5	2.8	0.7	76.4	5.7	17.9	0.082	0.518	23.750125	-103.963320
X. C. Súchil - Villa Unión	206.98	3	0	6426	5.4	76.3	3.9	4.5	1.2	4.3	1.7	2.2	0.5	81.7	3.9	14.4	0.082	0.577	23.744194	-104.000630
T. Izq. Graceros	210.00	1	0	5583	5.1	75.9	4.0	5.1	1.1	4.8	1.7	1.8	0.5	81.0	4.0	15.0	0.085	0.515	23.747799	-104.034190
Amado Nervo	231.51	1	0	5506	5.1	73.3	4.9	6.4	1.6	5.2	1.7	1.4	0.4	78.4	4.9	16.7	0.075	0.530	23.839304	-104.180426
Amado Nervo	231.51	3	0	6306	5.8	75.4	4.2	5.3	1.4	4.5	1.7	1.5	0.2	81.2	4.2	14.6	0.092	0.555	23.844279	-104.195714
Nombre de Dios	236.80	1	0	2763	8.9	77.7	4.2	8.3	0.5	0.1	0.1	0.1	0.1	86.6	4.2	9.2	0.086	0.534	23.843786	-104.223828
Nombre de Dios	236.80	3	0	4068	9.9	84.0	1.7	3.2	0.6	0.3	0.1	0.1	0.1	93.9	1.7	4.4	0.091	0.518	23.851333	-104.248827
T. Der. Constanacia	240.60	3	0	6365	3.1	78.9	4.3	4.0	1.7	3.7	2.0	1.8	0.5	82.0	4.3	13.7	0.083	0.542	23.872137	-104.269018
T. Der. Tuitán	250.80	3	0	6592	4.1	79.0	4.6	3.8	1.4	4.3	1.4	1.2	0.2	83.1	4.6	12.3	0.085	0.534	23.923113	-104.337215
T. Der. Independencia y Libertad	261.70	1	0	6703	4.4	78.9	4.2	3.6	1.1	4.5	1.6	1.4	0.3	83.3	4.2	12.5	0.088	0.541	23.993473	-104.373940
T. Der. Independencia y Libertad	261.70	3	1	3814	1.5	80.7	4.3	3.6	1.8	4.4	1.4	1.9	0.4	82.2	4.3	13.5	0.131	0.704	24.011760	-104.405197
T. Der. Independencia y Libertad	261.70	3	2	3937	1.7	80.6	4.8	3.9	1.6	3.9	1.6	1.5	0.4	82.3	4.8	12.9	0.101	0.704	24.011654	-104.405198
T. Izq. Parras de La Fuente	276.60	1	1	4646	2.2	81.6	4.7	4.0	1.1	3.4	1.5	1.1	0.4	83.8	4.7	11.5	0.125	0.751	24.019155	-104.506511
T. Izq. Parras de La Fuente	276.60	1	2	4639	2.0	81.5	4.7	3.7	1.5	3.5	1.3	1.4	0.4	83.5	4.7	11.8	0.094	0.751	24.019060	-104.506530
T. Izq. Parras de La Fuente	276.60	3	1	4342	4.3	83.4	3.0	4.9	1.4	1.7	0.7	0.5	0.1	87.7	3.0	9.3	0.096	0.510	24.021358	-104.527036
T. Izq. Parras de La Fuente	276.60	3	2	4768	4.0	83.3	2.9	5.0	1.7	1.8	0.8	0.4	0.1	87.3	2.9	9.8	0.076	0.510	24.021244	-104.527049
Durango	287.30	1	1	8730	5.4	84.6	1.8	4.6	1.4	1.1	0.4	0.5	0.2	90.0	1.8	8.2	0.084	0.505	24.026363	-104.574446
Durango	287.30	1	2	8439	5.3	84.5	1.9	4.7	1.4	1.0	0.4	0.6	0.2	89.8	1.9	8.3	0.077	0.505	24.026256	-104.574472

29 CARR: Ent. Cuauhtémoc - Ent. Osiris (Cuota)

CLAVE: 32558

RUTA: MEX-045D

AÑO: 2025

LUGAR	ESTACION				CLASIFICACION VEHICULAR EN PORCIENTO														COORDENADAS	
	KM	TE	SC	TDPA	M	A	B	C2	C3	T3S2	T3S3	T3S2R4	OTROS	A	B	C	K'	D	LATITUD	LONGITUD
T. C. Ent. Cosío - Ent. Cuauhtémoc	70.40	3	0	9805	2.4	56.9	5.8	12.8	3.9	10.0	3.3	3.9	1.0	59.3	5.8	34.9	0.061	0.611	22.492199	-102.361133
Plaza de Cobro Zacatecas	97.80	2	0	8872	0.3	46.2	4.1	4.8	4.3	23.2	4.8	9.1	3.2	46.5	4.1	49.4	0.067	0.500	22.710742	-102.448827
T. C. Aguascalientes - Zacatecas	103.40	1	0	9328	3.3	50.2	10.0	13.9	4.0	12.8	2.8	2.1	0.9	53.5	10.0	36.5	0.064	0.528	22.745527	-102.453341

30 CARR: Libramiento de Fresnillo (Cuota)

CLAVE: 32581

RUTA: MEX-045D

AÑO: 2025

LUGAR	ESTACION				CLASIFICACION VEHICULAR EN PORCIENTO														COORDENADAS	
	KM	TE	SC	TDPA	M	A	B	C2	C3	T3S2	T3S3	T3S2R4	OTROS	A	B	C	K'	D	LATITUD	LONGITUD
T. C. Zacatecas - Durango	49.80	3	1	3284	2.2	50.4	5.6	7.4	3.5	17.9	3.8	8.4	0.8	52.6	5.6	41.8	0.071	0.606	23.117371	-102.806715
T. C. Zacatecas - Durango	49.80	3	2	3676	2.1	50.3	5.6	7.7	3.1	18.3	4.0	8.0	0.9	52.4	5.6	42.0	0.079	0.606	23.118924	-102.807388
Plaza de Cobro Morfín Chávez	57.05	2	1	3755	4.5	47.0	2.0	4.4	3.7	23.0	4.5	9.3	1.6	51.5	2.0	46.5	0.088	0.500	23.177904	-102.828678
Plaza de Cobro Morfín Chávez	57.05	2	2	3755	4.5	47.0	2.0	4.4	3.7	23.0	4.5	9.3	1.6	51.5	2.0	46.5	0.088	0.500	23.177904	-102.828678

ZACATECAS

30 CARR: Libramiento de Fresnillo (Cuota)

CLAVE: 32581

RUTA: MEX-045D

AÑO: 2025

LUGAR	ESTACION				CLASIFICACION VEHICULAR EN PORCIENTO										COORDENADAS					
	KM	TE	SC	TDPA	M	A	B	C2	C3	T3S2	T3S3	T3S2R4	OTROS	A	B	C	K'	D	LATITUD	LONGITUD
T. Der. Plateros	61.70	1	1	4307	2.4	54.3	3.1	9.1	4.2	16.7	3.8	5.5	0.9	56.7	3.1	40.2	0.075	0.501	23.185513	-102.831647
T. Der. Plateros	61.70	1	2	4402	3.0	54.1	2.9	9.2	4.0	16.5	3.5	5.8	1.0	57.1	2.9	40.0	0.073	0.501	23.185444	-102.831917
T. Der. Plateros	61.70	3	1	3995	1.6	56.6	3.4	8.2	3.5	17.5	3.2	5.2	0.8	58.2	3.4	38.4	0.072	0.549	23.211151	-102.855460
T. Der. Plateros	61.70	3	2	4212	1.9	57.3	3.3	8.0	3.3	17.5	3.2	4.8	0.7	59.2	3.3	37.5	0.075	0.549	23.210923	-102.855607
T. C. Zacatecas - Durango	69.85	1	1	3847	1.9	57.4	5.5	12.1	2.7	11.5	3.8	4.2	0.9	59.3	5.5	35.2	0.071	0.528	23.238049	-102.913507
T. C. Zacatecas - Durango	69.85	1	2	4077	2.1	56.3	5.7	12.2	3.0	11.4	4.2	4.3	0.8	58.4	5.7	35.9	0.074	0.528	23.237890	-102.913796

31 CARR: Libramiento de Victor Rosales (Cuota)

CLAVE: 32015

RUTA: MEX-045D

AÑO: 2025

LUGAR	ESTACION				CLASIFICACION VEHICULAR EN PORCIENTO										COORDENADAS					
	KM	TE	SC	TDPA	M	A	B	C2	C3	T3S2	T3S3	T3S2R4	OTROS	A	B	C	K'	D	LATITUD	LONGITUD
T. C. Zacatecas - Durango	26.00	3	1	9713	2.0	64.5	4.3	8.8	3.1	10.5	2.4	3.7	0.7	66.5	4.3	29.2	0.070	0.528	22.935909	-102.688609
T. C. Zacatecas - Durango	26.00	3	2	8875	1.8	65.7	4.7	9.0	3.7	9.7	2.2	2.7	0.5	67.5	4.7	27.8	0.085	0.528	22.935959	-102.688820
Plaza de Cobro Calera Victor Rosales	26.50	2	1	8602	7.4	65.7	0.2	6.5	0.0	12.6	2.6	5.0	0.0	73.1	0.2	26.7	0.085	0.500	22.941860	-102.689827
Plaza de Cobro Calera Victor Rosales	26.50	2	2	8602	7.4	65.7	0.2	6.5	0.0	12.6	2.6	5.0	0.0	73.1	0.2	26.7	0.085	0.500	22.941860	-102.689827
T. C. Calera de Victor Rosales - Santiagoullo	27.83	3	1	8672	1.9	66.5	4.9	8.7	3.3	10.7	1.7	1.8	0.5	68.4	4.9	26.7	0.082	0.572	22.955478	-102.692599
T. C. Calera de Victor Rosales - Santiagoullo	27.83	3	2	9501	1.8	67.3	4.4	8.7	3.5	9.6	2.1	1.8	0.8	69.1	4.4	26.5	0.088	0.572	22.955042	-102.692716
T. C. Zacatecas - Durango	36.36	1	1	9994	1.9	64.7	4.2	9.3	4.0	10.0	2.0	3.3	0.6	66.6	4.2	29.2	0.076	0.658	23.005654	-102.744202
T. C. Zacatecas - Durango	36.36	1	2	9417	1.8	64.3	4.3	9.5	4.1	10.1	2.2	3.1	0.6	66.1	4.3	29.6	0.111	0.658	23.005498	-102.744273

32 CARR: Calera de Victor Rosales - Santiagoullo

CLAVE: 32016

RUTA: ZAC-016

AÑO: 2025

LUGAR	ESTACION				CLASIFICACION VEHICULAR EN PORCIENTO										COORDENADAS					
	KM	TE	SC	TDPA	M	A	B	C2	C3	T3S2	T3S3	T3S2R4	OTROS	A	B	C	K'	D	LATITUD	LONGITUD
Calera de Victor Rosales	0.00	3	0	5419	11.1	66.8	2.6	12.6	1.5	3.3	1.8	0.2	0.1	77.9	2.6	19.5	0.085	0.529	22.959613	-102.682908
T. C. Fresnillo - Ent. Bañón	23.60																			

33 CARR: Cieneguillas - Zacatecas

CLAVE: 32579

RUTA: ZAC

AÑO: 2025

LUGAR	ESTACION				CLASIFICACION VEHICULAR EN PORCIENTO										COORDENADAS					
	KM	TE	SC	TDPA	M	A	B	C2	C3	T3S2	T3S3	T3S2R4	OTROS	A	B	C	K'	D	LATITUD	LONGITUD
T. C. Guadalajara - Zacatecas	0.00	3	0	3246	1.9	78.8	1.3	13.9	1.6	2.3	0.2	0.0	0.0	80.7	1.3	18.0	0.093	0.611	22.760600	-102.654270
X. C. Libramiento de Guadalupe - Zacatecas	7.70	3	1	14404	4.2	75.2	2.1	9.5	4.0	3.5	0.8	0.6	0.1	79.4	2.1	18.5	0.108	0.620	22.756605	-102.590705
X. C. Libramiento de Guadalupe - Zacatecas	7.70	3	2	12772	4.3	74.3	2.3	9.6	4.2	3.9	0.7	0.5	0.2	78.6	2.3	19.1	0.092	0.620	22.756695	-102.590746
Zacatecas	9.33																			

ZACATECAS

34 CARR: Corral de Piedras - Tlaltenango

CLAVE: 32579

RUTA: ZAC

AÑO: 2025

LUGAR	ESTACION				CLASIFICACION VEHICULAR EN PORCIENTO										COORDENADAS					
	KM	TE	SC	TDPA	M	A	B	C2	C3	T3S2	T3S3	T3S2R4	OTROS	A	B	C	K'	D	LATITUD	LONGITUD
T. C. Guadalajara - Zacatecas	0.00	3	0	983	1.6	76.6	1.0	17.3	1.3	1.7	0.5	0.0	0.0	78.2	1.0	20.8	0.119	0.504	21.619376	-103.048213
Tlaltenango	57.10	1	0	1339	11.4	81.5	0.8	4.4	0.9	0.6	0.4	0.0	0.0	92.9	0.8	6.3	0.093	0.508	21.768369	-103.282139

35 CARR: Ent. Ojo Caliente - Ent. Ojuelos de Jalisco

CLAVE: 00126

RUTA: ZAC

AÑO: 2025

LUGAR	ESTACION				CLASIFICACION VEHICULAR EN PORCIENTO										COORDENADAS					
	KM	TE	SC	TDPA	M	A	B	C2	C3	T3S2	T3S3	T3S2R4	OTROS	A	B	C	K'	D	LATITUD	LONGITUD
T. C. Aguascalientes - Zacatecas	0.00	3	0	3093	3.3	81.3	2.1	9.7	1.6	2.0	0.0	0.0	0.0	84.6	2.1	13.3	0.107	0.637	22.604595	-102.240001
Gral. Pánfilo Natera	16.00	3	0	2274	4.3	84.0	1.5	8.5	1.3	0.3	0.1	0.0	0.0	88.3	1.5	10.2	0.084	0.589	22.651978	-102.103481
Lim. Edos. Term. Zac. Ppia. Jal.	134.00																			
T. C. San Luis Potosí - Lagos de Moreno	137.00																			

36 CARR: Fresnillo - Ent. Bañón

CLAVE: 32070

RUTA: ZAC

AÑO: 2025

LUGAR	ESTACION				CLASIFICACION VEHICULAR EN PORCIENTO										COORDENADAS					
	KM	TE	SC	TDPA	M	A	B	C2	C3	T3S2	T3S3	T3S2R4	OTROS	A	B	C	K'	D	LATITUD	LONGITUD
T. C. Zacatecas - Durango	0.00																			
X. Lib. Fresnillo (Cuota)	2.40	3	1	5185	4.0	79.9	1.2	11.5	1.2	0.9	1.0	0.3	0.0	83.9	1.2	14.9	0.083	0.538	23.177898	-102.823140
X. Lib. Fresnillo (Cuota)	2.40	3	2	5734	4.0	80.5	1.2	11.4	1.1	0.8	0.7	0.3	0.0	84.5	1.2	14.3	0.065	0.538	23.177994	-102.823175
T. Der. Víctor Rosales	23.80	1	0	3082	8.9	72.6	2.4	7.4	3.6	1.8	2.8	0.5	0.0	81.5	2.4	16.1	0.080	0.526	23.143905	-102.666179
T. Der. Víctor Rosales	23.80	3	0	2110	5.6	68.7	2.6	13.1	2.7	4.9	1.8	0.6	0.0	74.3	2.6	23.1	0.083	0.557	23.144134	-102.646177
González Ortega Bañón	45.80	1	0	2330	8.0	65.7	2.8	15.3	4.7	2.4	0.6	0.4	0.1	73.7	2.8	23.5	0.080	0.527	23.176798	-102.480692
T. C. Ent. Morelos - Saltillo	49.00	1	0	2914	7.7	66.6	2.9	14.9	4.6	2.2	0.6	0.3	0.2	74.3	2.9	22.8	0.080	0.509	23.153781	-102.417653

37 CARR: Fresnillo - Plateros

CLAVE: 32022

RUTA: ZAC-022

AÑO: 2025

LUGAR	ESTACION				CLASIFICACION VEHICULAR EN PORCIENTO										COORDENADAS					
	KM	TE	SC	TDPA	M	A	B	C2	C3	T3S2	T3S3	T3S2R4	OTROS	A	B	C	K'	D	LATITUD	LONGITUD
Fresnillo (Central)	0.00	3	1	5345	6.9	81.4	1.1	8.3	0.9	0.6	0.5	0.3	0.0	88.3	1.1	10.6	0.079	0.526	23.202986	-102.855677
Fresnillo (Lateral)	0.00	3	1	105	36.2	51.1	5.4	4.6	1.5	1.2	0.0	0.0	0.0	87.3	5.4	7.3	0.171	0.526	23.203158	-102.855364
Fresnillo (Central)	0.00	3	2	5000	7.4	77.1	1.2	11.1	1.2	0.5	1.0	0.4	0.1	84.5	1.2	14.3	0.073	0.526	23.203807	-102.855708
Plateros	4.90																			

ZACATECAS

38 CARR: Guadalupe - Ent. Cuauhtémoc

CLAVE: 00579

RUTA: ZAC-118

AÑO: 2025

LUGAR	ESTACION				CLASIFICACION VEHICULAR EN PORCIENTO													COORDENADAS		
	KM	TE	SC	TDPA	M	A	B	C2	C3	T3S2	T3S3	T3S2R4	OTROS	A	B	C	K'	D	LATITUD	LONGITUD
T. C. Libramiento de Guadalupe - Zacatecas (Baja)	0.00	3	1	2545	4.3	80.0	1.4	8.9	2.1	1.4	1.1	0.7	0.1	84.3	1.4	14.3	0.107	0.534	22.735900	-102.496239
T. C. Libramiento de Guadalupe - Zacatecas (Alta)	0.00	3	1	9293	5.1	86.6	0.9	4.7	1.4	0.8	0.4	0.1	0.0	91.7	0.9	7.4	0.082	0.534	22.735934	-102.496159
T. C. Libramiento de Guadalupe - Zacatecas (Baja)	0.00	3	2	2727	4.5	80.5	1.3	9.0	1.9	1.4	0.7	0.6	0.1	85.0	1.3	13.7	0.100	0.534	22.736213	-102.496007
T. C. Libramiento de Guadalupe - Zacatecas (Alta)	0.00	3	2	8731	5.0	86.9	0.9	4.5	1.3	0.8	0.4	0.2	0.0	91.9	0.9	7.2	0.085	0.534	22.736050	-102.496066
La Cieneguilla	3.00																			
T. C. Ent. Cuauhtémoc - Ent. Osiris Cuota	39.31	1	0	1770	2.4	82.1	0.8	12.1	1.5	0.9	0.1	0.1	0.0	84.5	0.8	14.7	0.097	0.523	22.485196	-102.360165

39 CARR: Ramal a Loreto

CLAVE: 32067

RUTA: ZAC

AÑO: 2025

LUGAR	ESTACION				CLASIFICACION VEHICULAR EN PORCIENTO													COORDENADAS		
	KM	TE	SC	TDPA	M	A	B	C2	C3	T3S2	T3S3	T3S2R4	OTROS	A	B	C	K'	D	LATITUD	LONGITUD
T. C. Providencia - Luis Moya	0.00	3	0	2007	2.3	75.8	2.5	11.7	2.7	3.1	1.8	0.1	0.0	78.1	2.5	19.4	0.092	0.530	22.390754	-102.239155
Loreto	32.30																			

40 CARR: Ramal a Nochistlán

CLAVE: 32545

RUTA: ZAC

AÑO: 2025

LUGAR	ESTACION				CLASIFICACION VEHICULAR EN PORCIENTO													COORDENADAS		
	KM	TE	SC	TDPA	M	A	B	C2	C3	T3S2	T3S3	T3S2R4	OTROS	A	B	C	K'	D	LATITUD	LONGITUD
T. C. Yahualica - Jaralillo	0.00	3	1	2553	6.8	79.7	1.4	9.5	1.8	0.4	0.3	0.1	0.0	86.5	1.4	12.1	0.106	0.502	21.355061	-102.792877
T. C. Yahualica - Jaralillo	0.00	3	2	2414	7.3	78.8	1.5	9.0	2.2	0.7	0.3	0.2	0.0	86.1	1.5	12.4	0.101	0.502	21.354973	-102.792912
Nochistlán	5.70	1	1	3906	7.3	79.6	1.5	9.9	1.0	0.3	0.3	0.1	0.0	86.9	1.5	11.6	0.084	0.535	21.356333	-102.819835
Nochistlán	5.70	1	2	3894	7.2	79.9	1.8	9.3	1.2	0.3	0.2	0.1	0.0	87.1	1.8	11.1	0.100	0.535	21.356230	-102.819854

41 CARR: Ramal a San Pedro Piedra Gorda

CLAVE: 00553

RUTA: ZAC-AGS

AÑO: 2025

LUGAR	ESTACION				CLASIFICACION VEHICULAR EN PORCIENTO													COORDENADAS		
	KM	TE	SC	TDPA	M	A	B	C2	C3	T3S2	T3S3	T3S2R4	OTROS	A	B	C	K'	D	LATITUD	LONGITUD
T. C. Aguascalientes - Zacatecas	0.00	3	0	1400	2.0	78.2	3.0	12.4	1.3	2.8	0.3	0.0	0.0	80.2	3.0	16.8	0.095	0.526	22.465427	-102.262928
Lim. Edos. Term. Zac. Ppia. Ags.	5.00																			
Lim. Edos. Term. Ags. Ppia. Zac.	8.00																			
San Pedro Piedra Gorda	9.00	1	0	2041	7.8	76.1	2.3	8.2	2.0	2.9	0.7	0.0	0.0	83.9	2.3	13.8	0.098	0.535	22.452349	-102.338517

ZACATECAS

42 CARR: San Gil - Jarillas

CLAVE: 00527

RUTA: AGS-012-ZAC

AÑO: 2025

LUGAR	ESTACION				CLASIFICACION VEHICULAR EN PORCIENTO													COORDENADAS		
	KM	TE	SC	TDPA	M	A	B	C2	C3	T3S2	T3S3	T3S2R4	OTROS	A	B	C	K'	D	LATITUD	LONGITUD
T. C. Rincón de Romos - Ciénega Grande	0.00	3	0	3012	11.8	77.5	3.4	3.8	2.0	0.7	0.3	0.3	0.2	89.3	3.4	7.3	0.084	0.556	22.213036	-102.022937
Guadalupe de Atlas	5.40	1	0	3025	14.0	75.7	1.9	5.3	1.9	0.9	0.2	0.1	0.0	89.7	1.9	8.4	0.087	0.519	22.259356	-102.026831
Lim. Edos. Term. Ags. Ppia. Zac.	10.00																			
Lim. Edos. Term. Zac. Ppia. Ags.	11.30																			
Jarillas	12.00																			

43 CARR: San Rafael - Villa García

CLAVE: 00525

RUTA: AGS-ZAC

AÑO: 2025

LUGAR	ESTACION				CLASIFICACION VEHICULAR EN PORCIENTO													COORDENADAS		
	KM	TE	SC	TDPA	M	A	B	C2	C3	T3S2	T3S3	T3S2R4	OTROS	A	B	C	K'	D	LATITUD	LONGITUD
T. C. Ent. La Calavera - Ent. San Pedro	0.00	3	0	3047	10.9	81.6	2.2	3.1	0.9	0.8	0.3	0.2	0.0	92.5	2.2	5.3	0.099	0.630	22.116416	-102.011515
Lim. Edos. Term. Ags. Ppia. Zac.	3.00																			
Villa García	10.00	1	0	4060	7.8	76.8	2.1	8.3	1.7	2.4	0.9	0.0	0.0	84.6	2.1	13.3	0.093	0.645	22.135373	-101.972298

44 CARR: Santa Mónica - Pozo de Gamboa

CLAVE: 32568

RUTA: ZAC

AÑO: 2025

LUGAR	ESTACION				CLASIFICACION VEHICULAR EN PORCIENTO													COORDENADAS		
	KM	TE	SC	TDPA	M	A	B	C2	C3	T3S2	T3S3	T3S2R4	OTROS	A	B	C	K'	D	LATITUD	LONGITUD
T. C. Aguascalientes - Zacatecas	0.00	3	0	7654	4.2	75.4	3.3	9.5	3.0	2.4	1.5	0.6	0.1	79.6	3.3	17.1	0.073	0.575	22.765959	-102.423125
Tacoaleche	7.60	3	0	3589	4.8	78.3	1.9	9.4	2.2	1.5	1.5	0.3	0.1	83.1	1.9	15.0	0.107	0.504	22.830406	-102.398410
Pozo de Gamboa	34.50																			

45 CARR: Sombrerete - González Ortega

CLAVE: 32568

RUTA: ZAC

AÑO: 2025

LUGAR	ESTACION				CLASIFICACION VEHICULAR EN PORCIENTO													COORDENADAS		
	KM	TE	SC	TDPA	M	A	B	C2	C3	T3S2	T3S3	T3S2R4	OTROS	A	B	C	K'	D	LATITUD	LONGITUD
T. C. Zacatecas - Durango	0.00	3	0	1172	2.6	84.6	1.2	8.2	1.6	1.0	0.5	0.3	0.0	87.2	1.2	11.6	0.118	0.529	23.661599	-103.543429
González Ortega	38.70	1	0	939	4.3	78.4	3.6	10.7	0.7	1.8	0.3	0.2	0.0	82.7	3.6	13.7	0.101	0.579	23.944635	-103.461954

46 CARR: Yahualica - Jaralillo

CLAVE:

RUTA: JAL-ZAC

AÑO: 2025

LUGAR	ESTACION				CLASIFICACION VEHICULAR EN PORCIENTO													COORDENADAS		
	KM	TE	SC	TDPA	M	A	B	C2	C3	T3S2	T3S3	T3S2R4	OTROS	A	B	C	K'	D	LATITUD	LONGITUD
Yahualica de González Gallo	0.00	3	1	1829	6.4	88.3	1.4	2.4	0.8	0.4	0.2	0.1	0.0	94.7	1.4	3.9	0.101	0.547	21.195677	-102.884738
Yahualica de González Gallo	0.00	3	2	1815	6.3	88.9	1.4	1.9	0.9	0.3	0.2	0.1	0.0	95.2	1.4	3.4	0.091	0.547	21.195670	-102.884814

ZACATECAS

46 CARR: Yahualica - Jaralillo

CLAVE:

RUTA: JAL-ZAC

AÑO: 2025

LUGAR	ESTACION				CLASIFICACION VEHICULAR EN PORCIENTO													COORDENADAS		
	KM	TE	SC	TDPA	M	A	B	C2	C3	T3S2	T3S3	T3S2R4	OTROS	A	B	C	K'	D	LATITUD	LONGITUD
T. Der. Mexicacán	16.00	3	0	1596	2.9	87.8	2.0	3.7	1.8	0.9	0.5	0.3	0.1	90.7	2.0	7.3	0.133	0.521	21.254479	-102.802705
Lim. Edos. Term. Jal. Ppia. Zac.	22.00																			
Lim. Edos. Term. Zac. Ppia. Jal.	24.50																			
Teocaltiche	57.00	1	0	2713	4.8	85.5	2.4	3.6	1.2	1.1	0.7	0.6	0.1	90.3	2.4	7.3	0.093	0.567	21.425790	-102.589337
Teocaltiche	57.00	3	0	2899	5.3	85.4	1.7	4.0	1.6	1.2	0.6	0.2	0.0	90.7	1.7	7.6	0.088	0.531	21.455216	-102.555834
T. C. León - Aguascalientes	96.00	1	0	2988	4.7	82.3	2.7	3.1	2.7	1.9	1.5	0.4	0.7	87.0	2.7	10.3	0.072	0.537	21.642200	-102.279725

47 CARR: Libramiento Noreste de Zacatecas (Cuota)

CLAVE: 32582

RUTA: ZAC-D

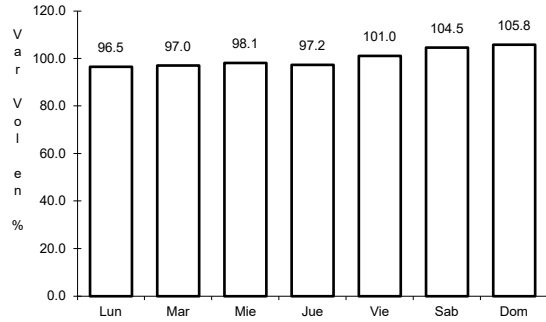
AÑO: 2025

LUGAR	ESTACION				CLASIFICACION VEHICULAR EN PORCIENTO													COORDENADAS		
	KM	TE	SC	TDPA	M	A	B	C2	C3	T3S2	T3S3	T3S2R4	OTROS	A	B	C	K'	D	LATITUD	LONGITUD
T. C. Aguascalientes - Zacatecas	102.00	3	0	7336	2.6	33.0	8.4	11.1	9.3	21.1	5.4	8.1	1.0	35.6	8.4	56.0	0.069	0.547	22.759185	-102.460186
T. C. Ent. Morelos - Saltillo	125.00	1	0	8333	2.8	36.2	6.9	14.8	8.3	18.1	3.5	8.5	0.9	39.0	6.9	54.1	0.063	0.608	22.850681	-102.608478

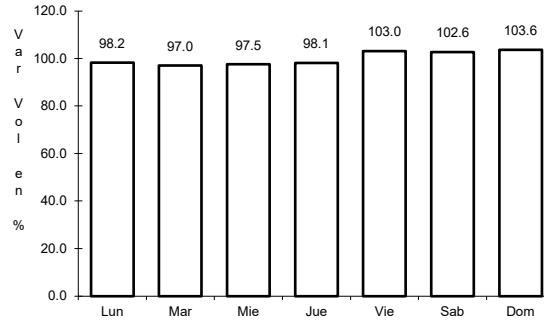
1 CARR: Aguascalientes - Jalpa

CLAVE: 00095

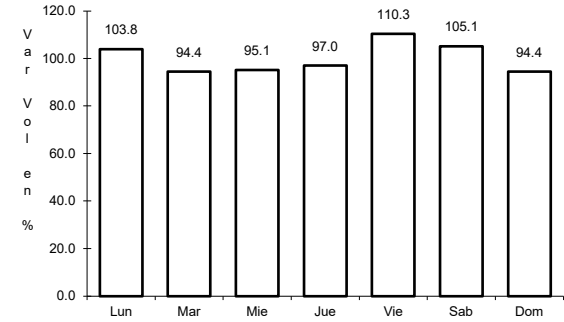
ruta: MEX-070



Km: 0.00                      Tipo: 3                      Sent: 1



Km: 0.00                      Tipo: 3                      Sent: 2

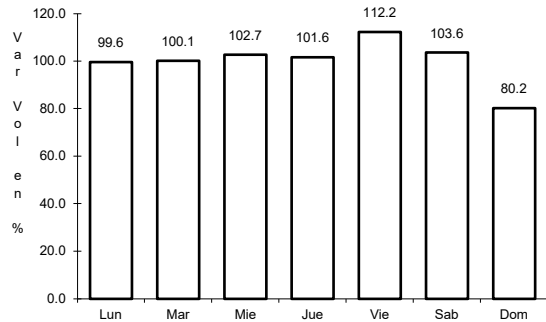


Km: 90.66                      Tipo: 1                      Sent: 0

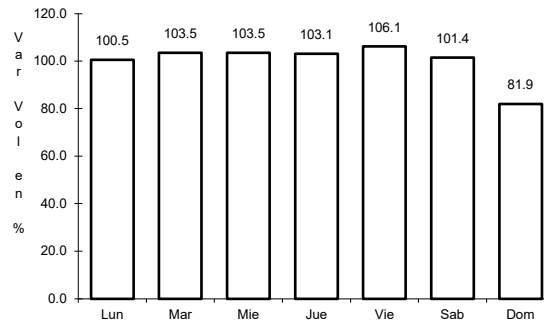
2 CARR: Aguascalientes - Zacatecas

CLAVE: 00524

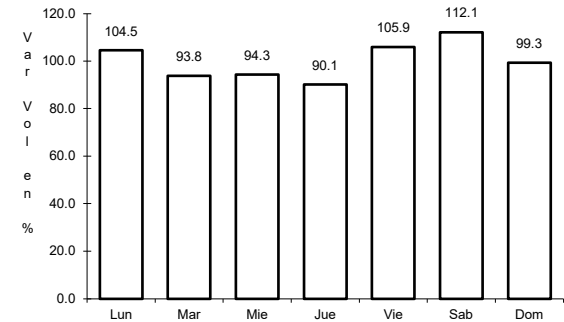
ruta: MEX-045



Km: 6.00                      Tipo: 1                      Sent: 1



Km: 6.00                      Tipo: 1                      Sent: 2

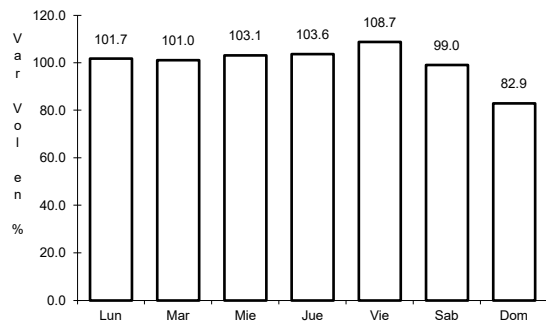


Km: 40.90                      Tipo: 3                      Sent: 0

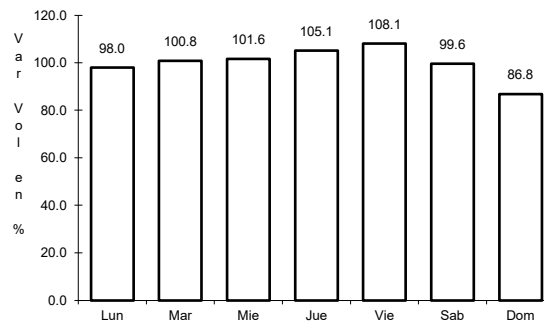
3 CARR: Blvd. Guadalupe - Zacatecas - La Escondida

CLAVE: 00544

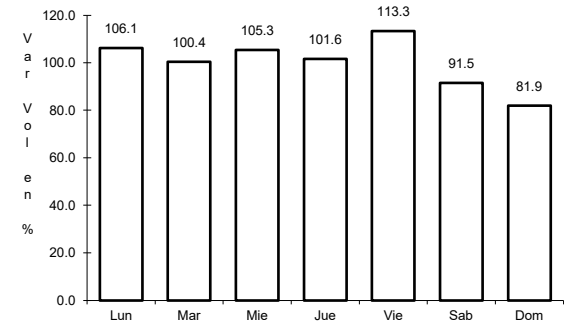
ruta: MEX-045



Km: 7.70                      Tipo: 1                      Sent: 1



Km: 7.70                      Tipo: 1                      Sent: 2

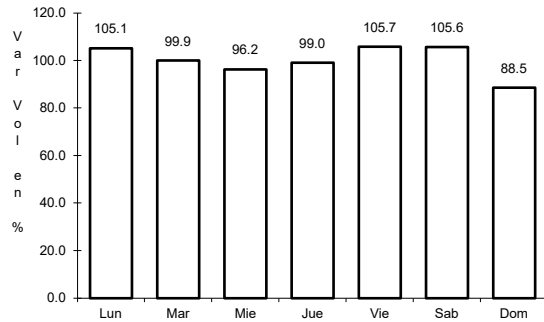


Km: 14.50                      Tipo: 1                      Sent: 1

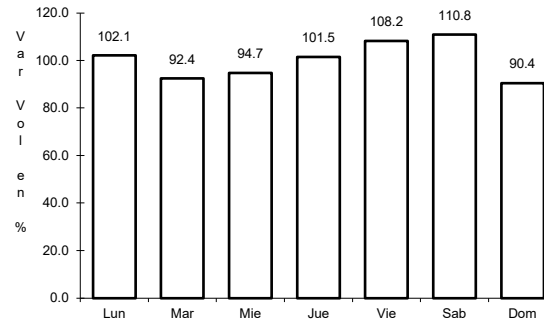
4 CARR: Carbonera - T. C. (Ent. Morelos - Saltillo)

CLAVE: 00218

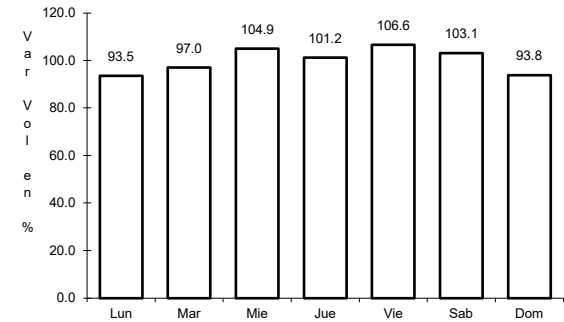
ruta: MEX-062



Km: 0.00                      Tipo: 3                      Sent: 0



Km: 18.00                      Tipo: 1                      Sent: 0

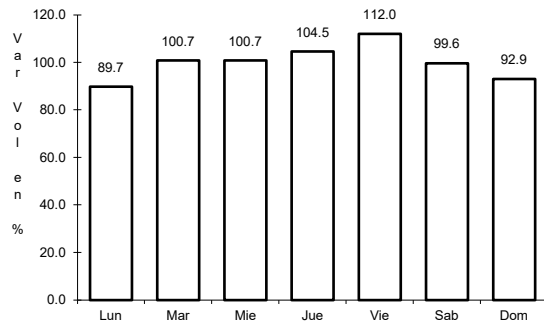


Km: 112.00                      Tipo: 1                      Sent: 0

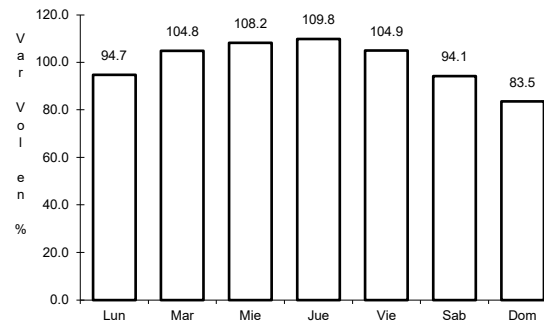
5 CARR: Ent. Cosío - Ent. Cuauhtémoc

CLAVE: 00579

ruta: MEX-045



Km: 57.20                      Tipo: 3                      Sent: 0

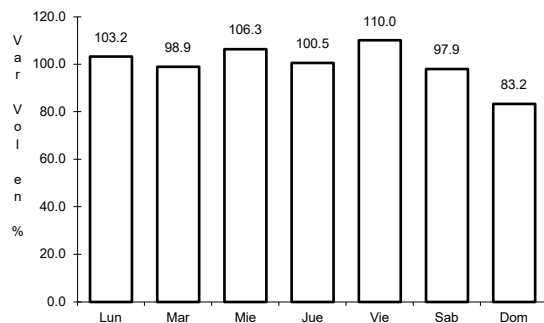


Km: 70.40                      Tipo: 1                      Sent: 0

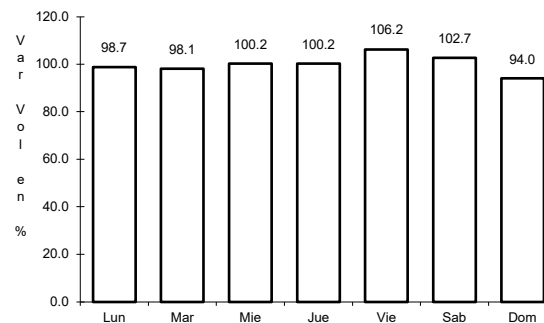
6 CARR: Ent. La Chicharrona - Cuencamé

CLAVE: 00152

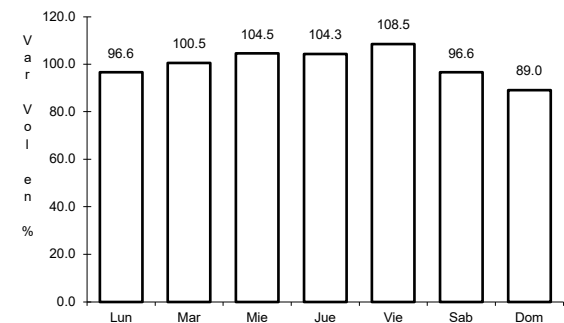
ruta: MEX-049



Km: 0.00                      Tipo: 3                      Sent: 1



Km: 0.00                      Tipo: 3                      Sent: 2

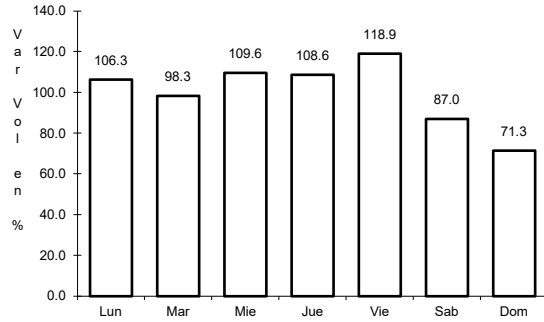


Km: 124.50                      Tipo: 1                      Sent: 0

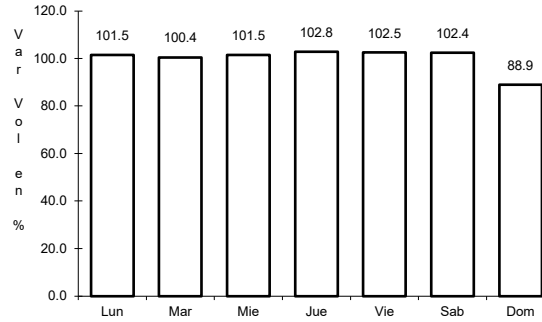
7 CARR: Ent. Morelos - Ent. Noria de Gringos

CLAVE: 00544

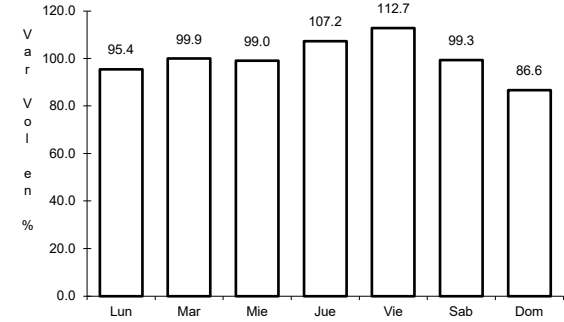
ruta: MEX-045



Km: 0.50      Tipo: 1      Sent: 1



Km: 0.50      Tipo: 1      Sent: 2

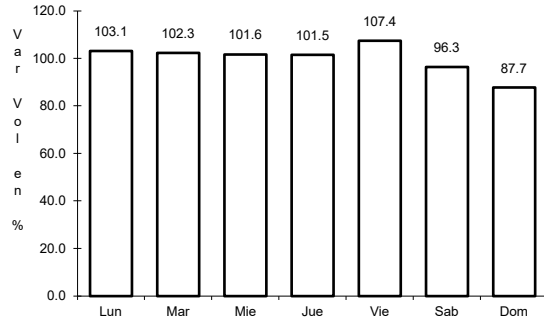


Km: 0.50      Tipo: 3      Sent: 0

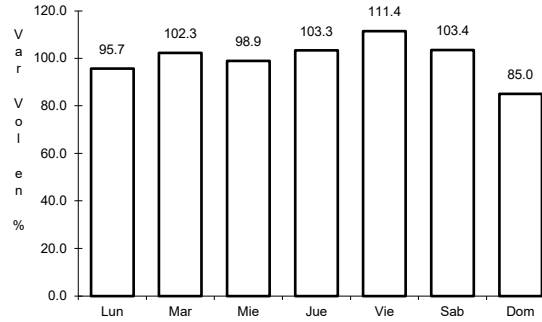
8 CARR: Ent. Morelos - Saltillo

CLAVE: 00149

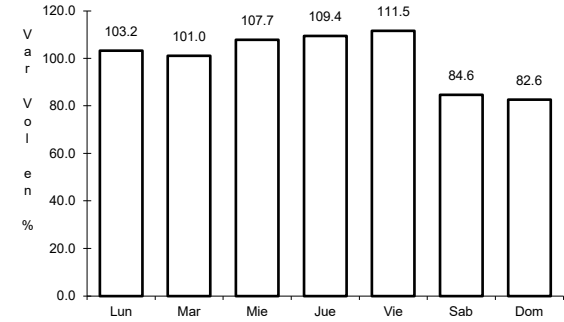
ruta: MEX-054



Km: 0.00      Tipo: 3      Sent: 1



Km: 0.00      Tipo: 3      Sent: 2

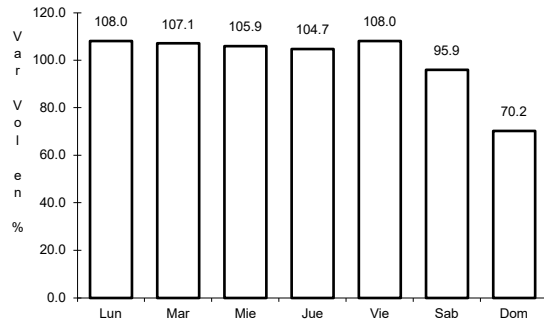


Km: 333.00      Tipo: 3      Sent: 1

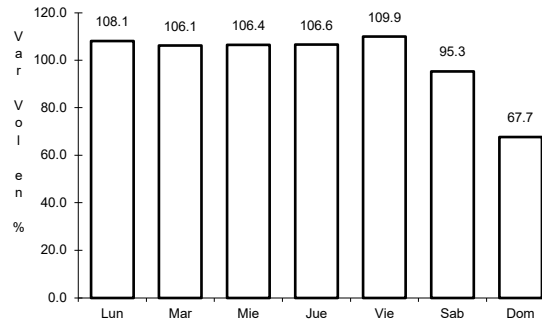
9 CARR: Ent. Rivier - San Marcos

CLAVE: 00285

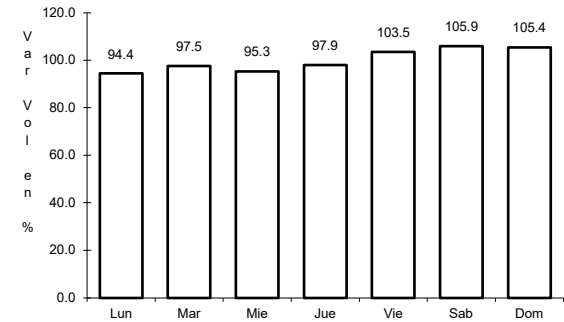
ruta: MEX-066



Km: 0.00      Tipo: 3      Sent: 1



Km: 0.00      Tipo: 3      Sent: 2

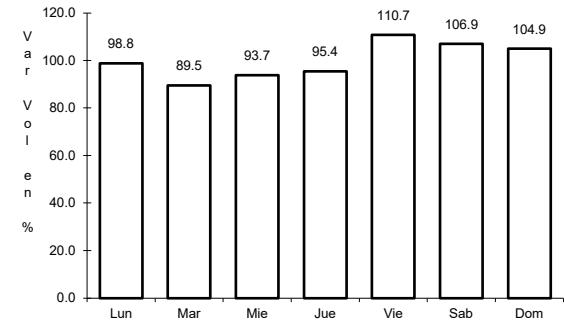
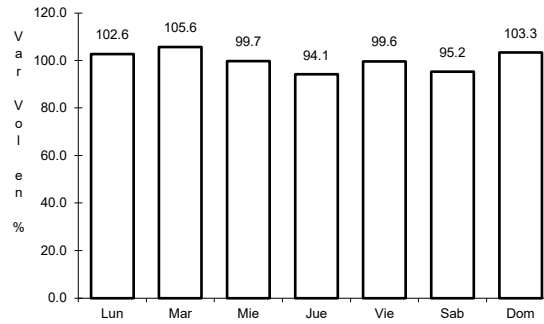
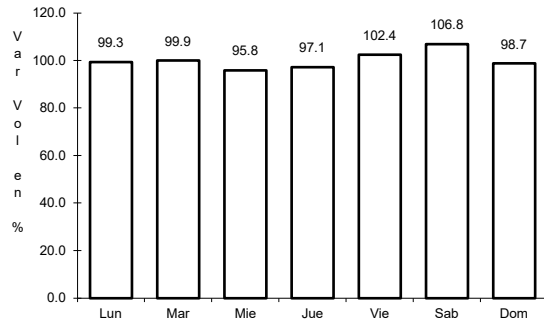


Km: 55.34      Tipo: 1      Sent: 0

10 CARR: Ent. Tesisán - Ent. Malpaso

CLAVE: 00584

ruta: MEX-023



Km: 64.00      Tipo: 1      Sent: 0

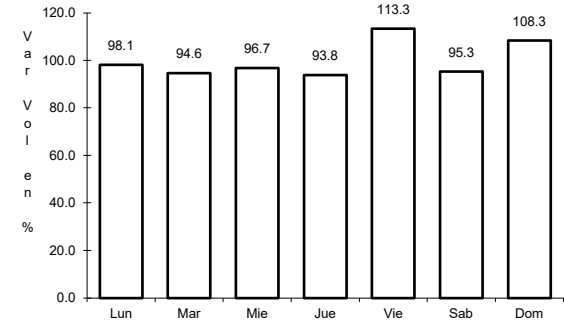
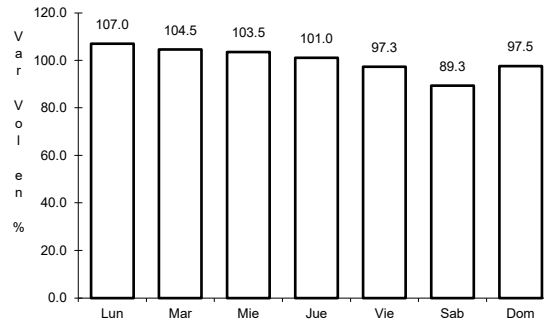
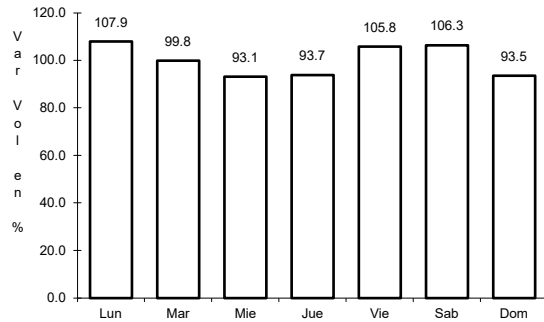
Km: 284.00      Tipo: 1      Sent: 1

Km: 284.00      Tipo: 1      Sent: 2

11 CARR: Fresnillo - Valparaíso

CLAVE: 32547

ruta: MEX-044



Km: 0.00      Tipo: 3      Sent: 0

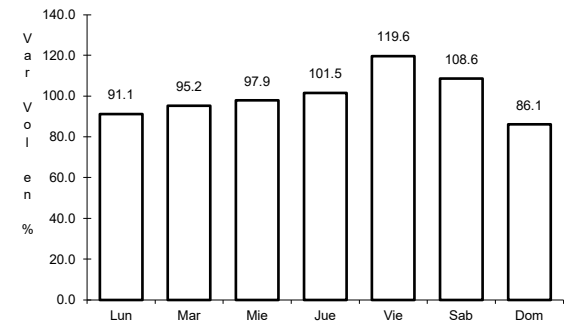
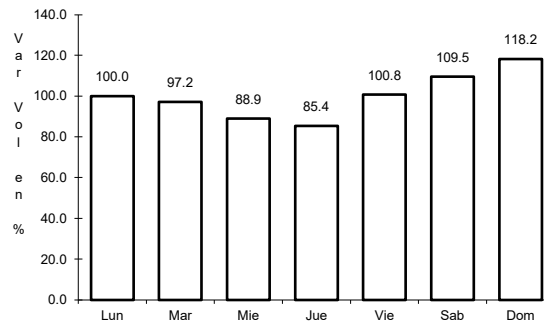
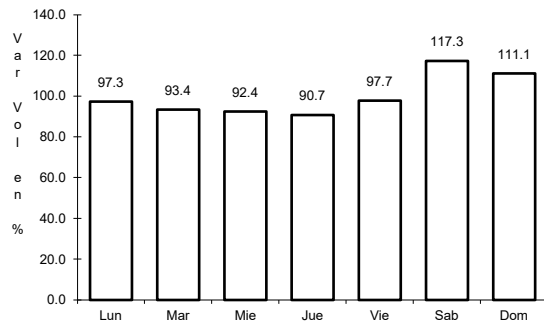
Km: 45.00      Tipo: 3      Sent: 0

Km: 90.00      Tipo: 1      Sent: 0

12 CARR: Guadalajara - Zacatecas

CLAVE: 00150

ruta: MEX-054



Km: 6.19      Tipo: 3      Sent: 1

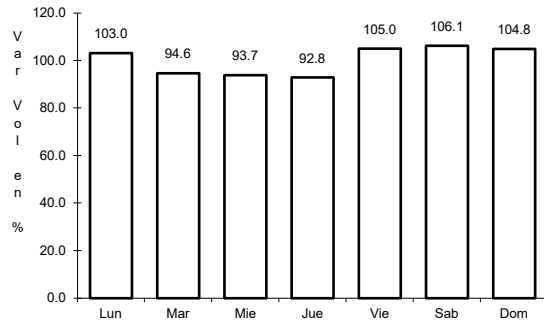
Km: 6.19      Tipo: 3      Sent: 2

Km: 159.39      Tipo: 1      Sent: 0

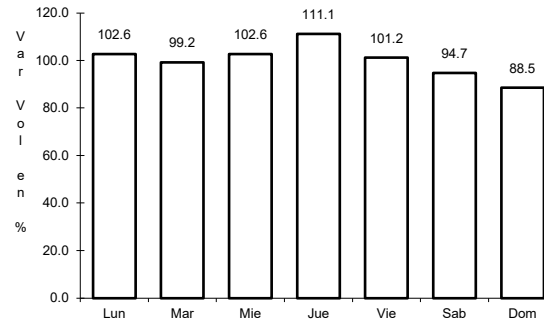
13 CARR: Jerez - Fresnillo

CLAVE: 32542

ruta: MEX-023



Km: 0.00      Tipo: 3      Sent: 0

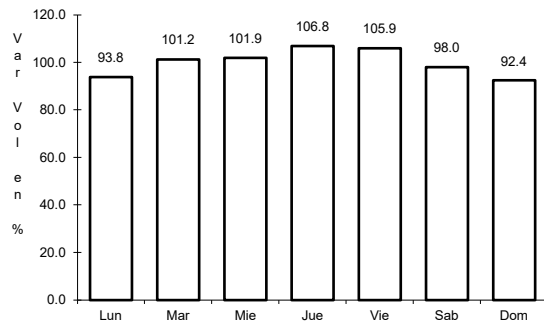


Km: 60.00      Tipo: 1      Sent: 0

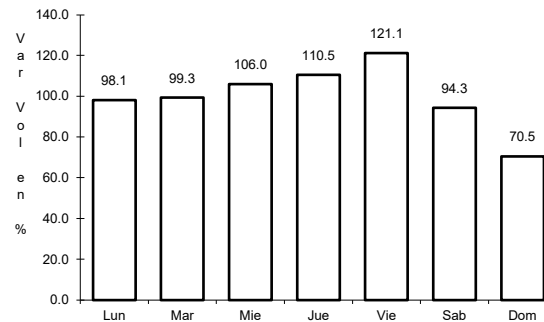
14 CARR: Libramiento de Guadalupe - Zacatecas

CLAVE: 32582

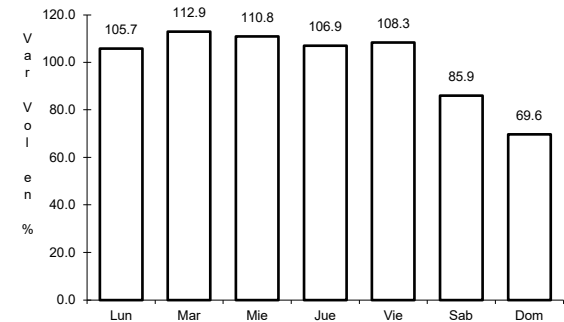
ruta: MEX-045



Km: 13.00      Tipo: 3      Sent: 1



Km: 13.00      Tipo: 3      Sent: 2

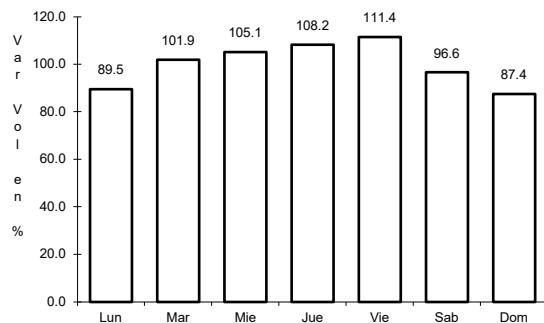


Km: 17.50      Tipo: 1      Sent: 1

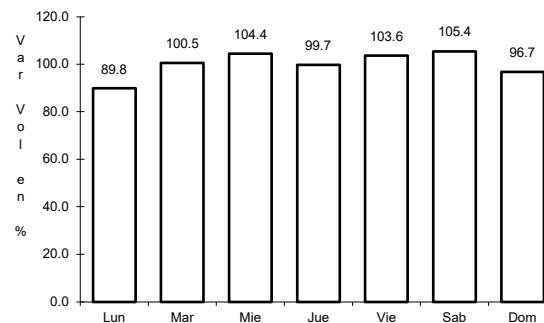
15 CARR: Libramiento de Río Grande

CLAVE:

ruta: MEX-049



Km: 55.90      Tipo: 3      Sent: 0

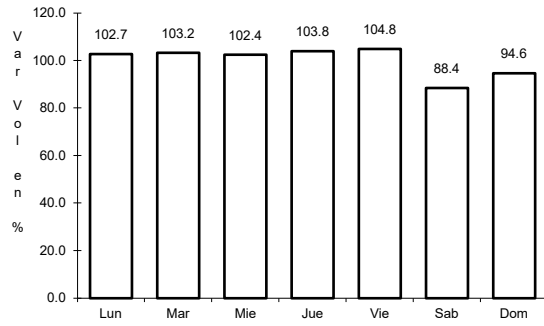


Km: 68.59      Tipo: 1      Sent: 0

16 CARR: Libramiento de Sombrerete

CLAVE:

ruta: MEX-045



Km: 163.50

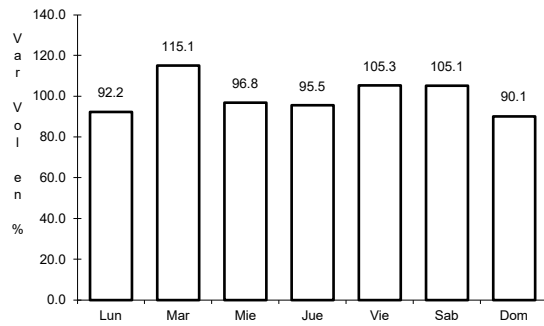
Tipo: 1

Sent: 0

17 CARR: Libramiento de Tabasco

CLAVE:

ruta: MEX-054



Km: 190.10

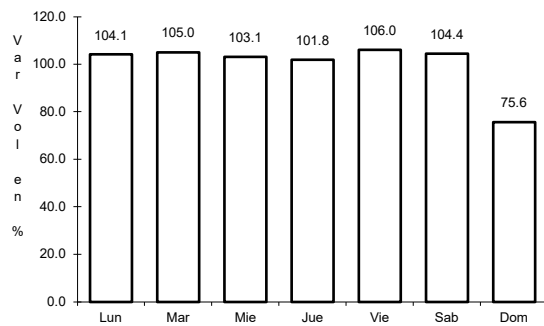
Tipo: 1

Sent: 0

18 CARR: Providencia - Luis Moya

CLAVE: 00112

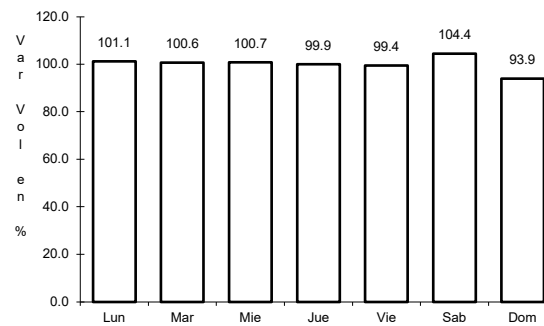
ruta: MEX-071



Km: 0.00

Tipo: 3

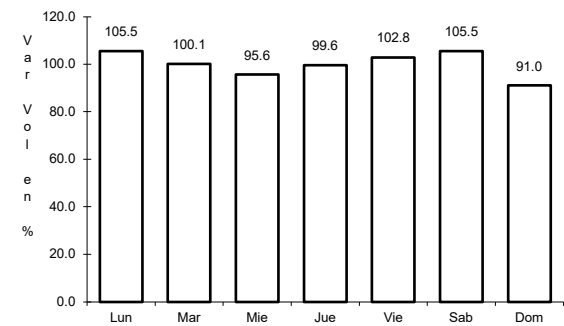
Sent: 0



Km: 21.22

Tipo: 3

Sent: 0



Km: 43.52

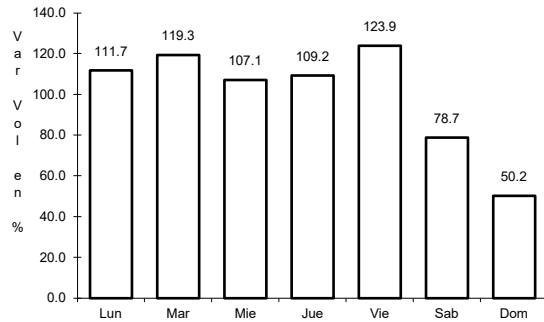
Tipo: 1

Sent: 0

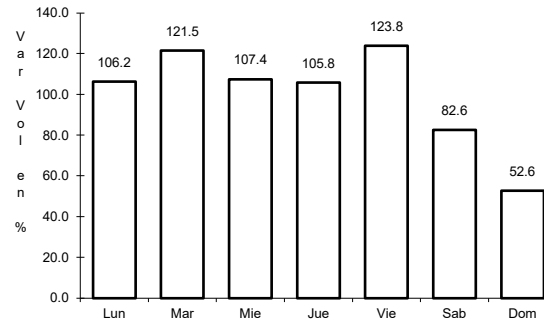
19 CARR: Ramal a Aeropuerto Zacatecas

CLAVE: 32546

RUTA: MEX-045



Km: 0.00                      Tipo: 3                      Sent: 1

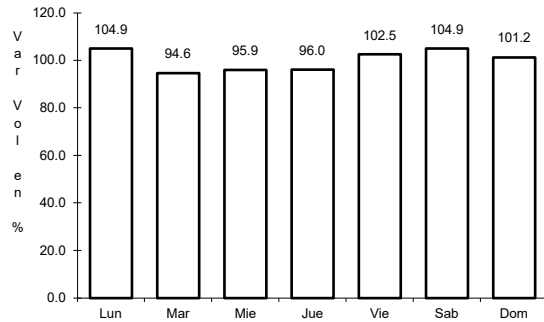


Km: 0.00                      Tipo: 3                      Sent: 2

20 CARR: Ramal a Concepción del Oro

CLAVE: 32565

RUTA: MEX-054

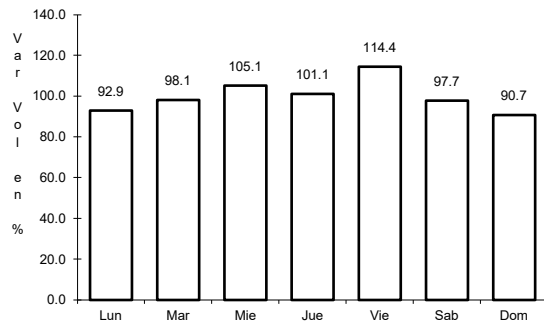


Km: 0.00                      Tipo: 3                      Sent: 0

21 CARR: Ramal a Francisco Murguía (Nieves)

CLAVE: 32541

RUTA: MEX-049

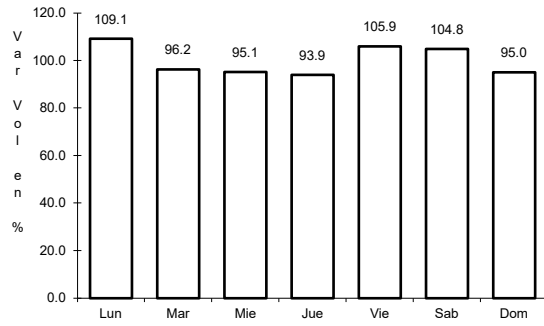


Km: 0.00                      Tipo: 3                      Sent: 0

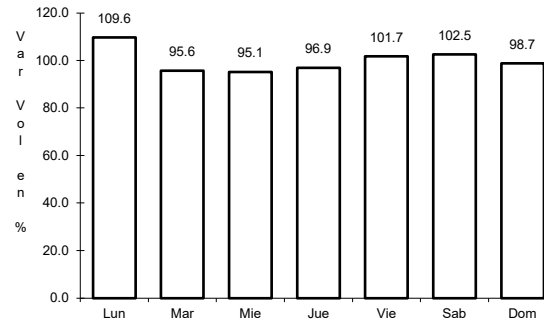
22 CARR: Ramal a Gral. Pánfilo Natera

CLAVE: 32559

ruta: MEX-049



Km: 0.00                      Tipo: 3                      Sent: 1

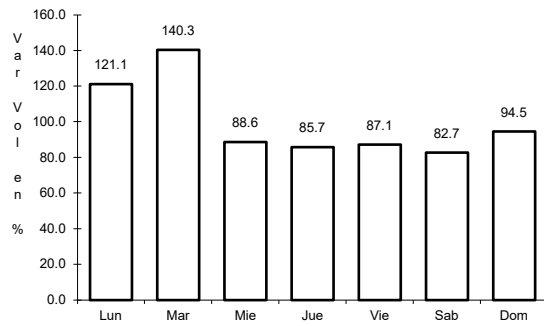


Km: 0.00                      Tipo: 3                      Sent: 2

23 CARR: Ramal a Ruinas de Chicomostoc

CLAVE: 00544

ruta: MEX-045

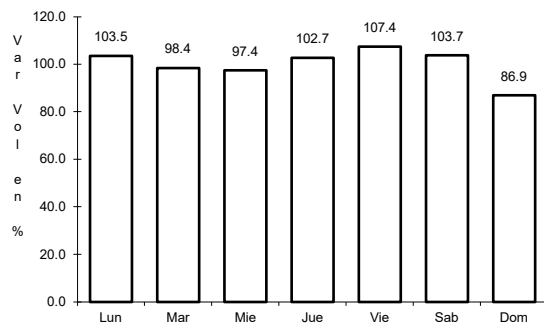


Km: 0.00                      Tipo: 3                      Sent: 0

24 CARR: Ramal a San Martín

CLAVE: 00544

ruta: MEX-045

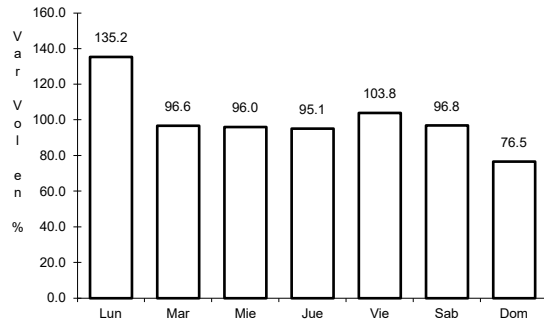


Km: 0.00                      Tipo: 3                      Sent: 0

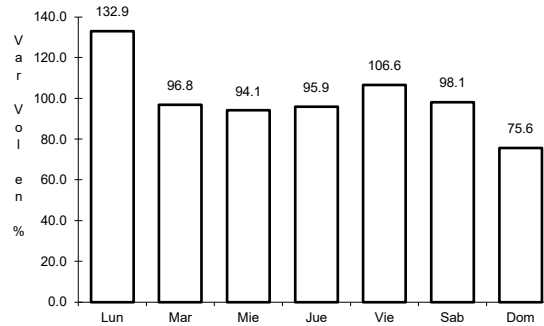
25 CARR: Ramal a Villa de Cos

CLAVE: 32564

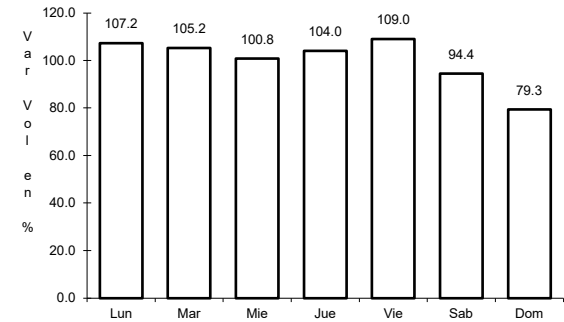
ruta: MEX-054



Km: 0.00                      Tipo: 3                      Sent: 1



Km: 0.00                      Tipo: 3                      Sent: 2

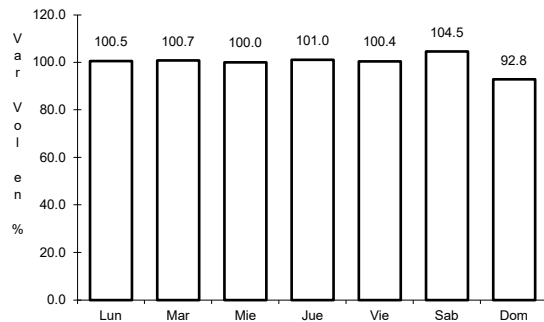


Km: 3.30                      Tipo: 1                      Sent: 1

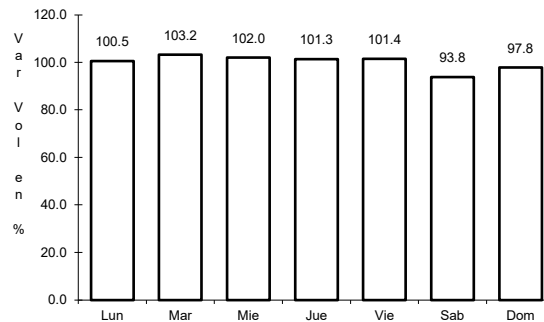
26 CARR: San Luis Potosí - Ent. Arcinas

CLAVE: 00134

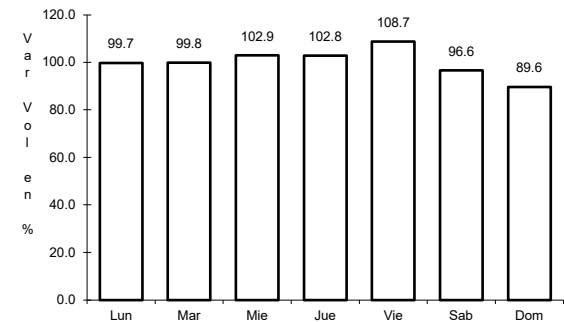
ruta: MEX-049



Km: 9.35                      Tipo: 3                      Sent: 1



Km: 9.35                      Tipo: 3                      Sent: 2

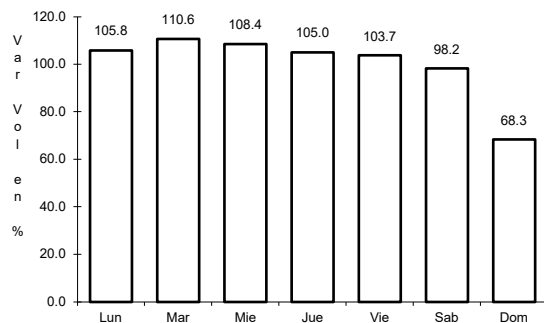


Km: 162.98                      Tipo: 1                      Sent: 1

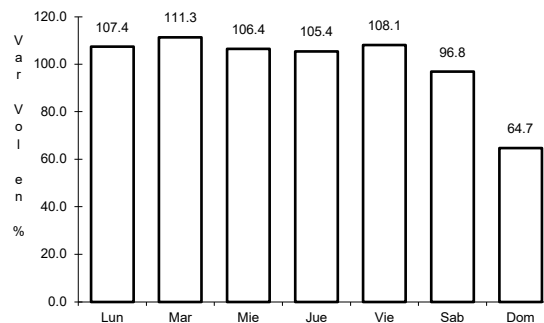
27 CARR: San Luis Potosí - Lagos de Moreno

CLAVE: 00133

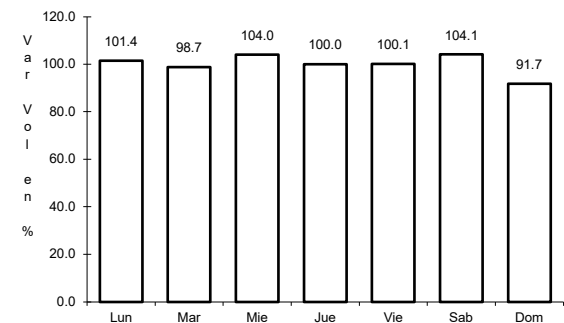
ruta: MEX-070-080



Km: 0.00                      Tipo: 3                      Sent: 1



Km: 0.00                      Tipo: 3                      Sent: 2

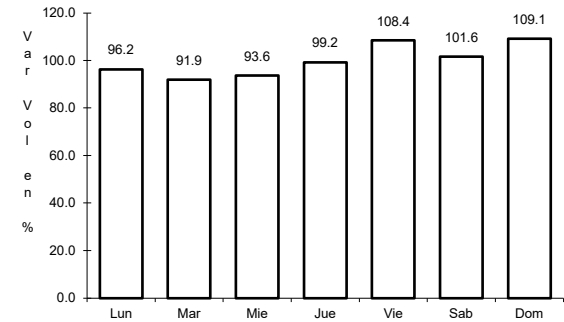
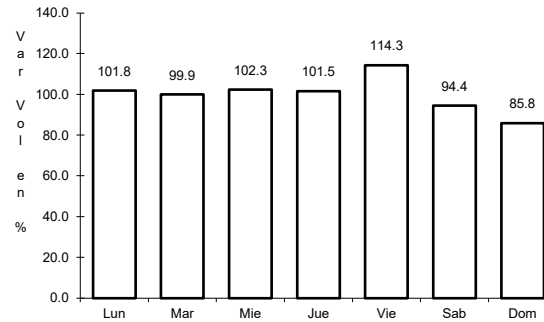
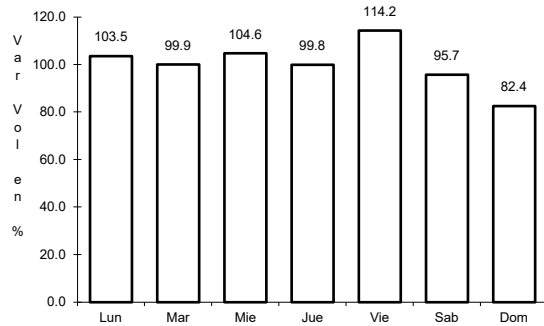


Km: 61.90                      Tipo: 3                      Sent: 0

28 CARR: Zacatecas - Durango

CLAVE: 00544

ruta: MEX-045



Km: 6.40

Tipo: 3

Sent: 1

Km: 6.40

Tipo: 3

Sent: 2

Km: 261.70

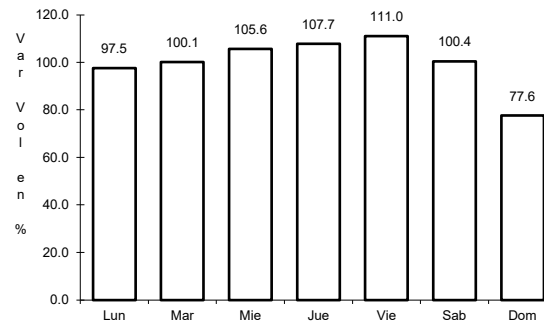
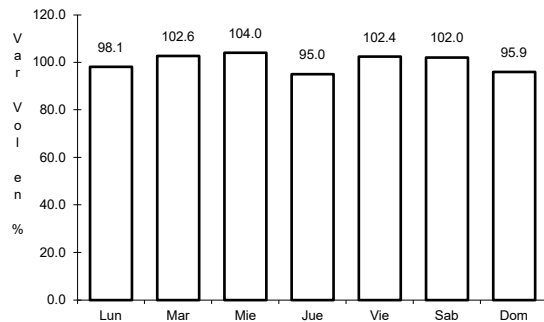
Tipo: 1

Sent: 0

29 CARR: Ent. Cuauhtémoc - Ent. Osiris (Cuota)

CLAVE: 32558

ruta: MEX-045D



Km: 70.40

Tipo: 3

Sent: 0

Km: 103.40

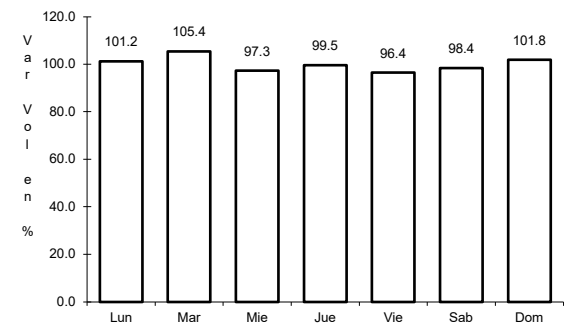
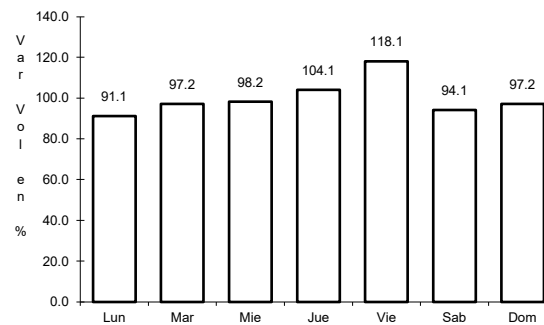
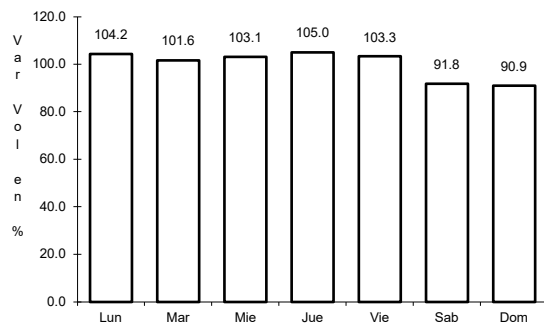
Tipo: 1

Sent: 0

30 CARR: Libramiento de Fresnillo (Cuota)

CLAVE: 32581

ruta: MEX-045D



Km: 49.80

Tipo: 3

Sent: 1

Km: 49.80

Tipo: 3

Sent: 2

Km: 69.85

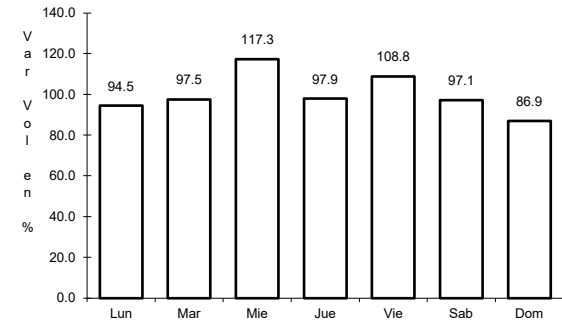
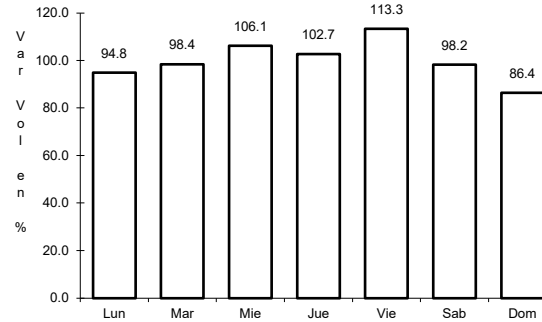
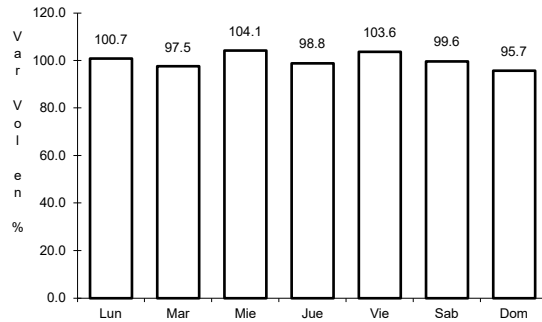
Tipo: 1

Sent: 1

31 CARR: Libramiento de Víctor Rosales (Cuota)

CLAVE: 32015

RUTA: MEX-045D



Km: 26.00                      Tipo: 3                      Sent: 1

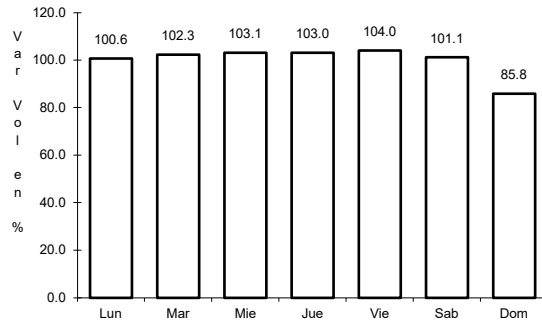
Km: 26.00                      Tipo: 3                      Sent: 2

Km: 36.36                      Tipo: 1                      Sent: 1

32 CARR: Calera de Víctor Rosales - Santiagoillo

CLAVE: 32016

RUTA: ZAC-016

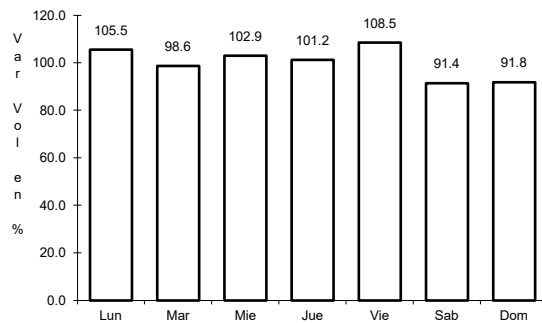


Km: 0.00                      Tipo: 3                      Sent: 0

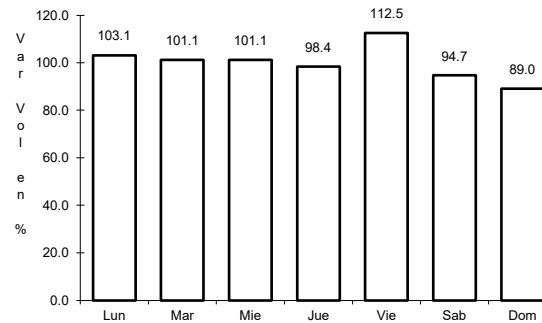
33 CARR: Cieneguillas - Zacatecas

CLAVE: 32579

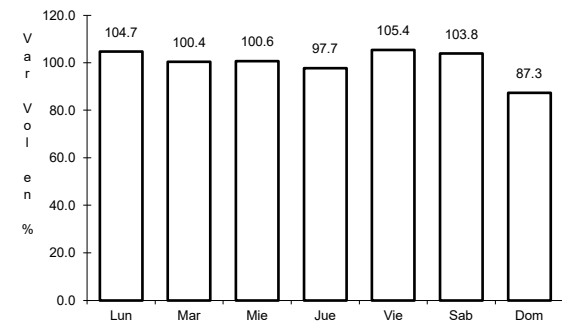
RUTA: ZAC



Km: 0.00                      Tipo: 3                      Sent: 0



Km: 7.70                      Tipo: 3                      Sent: 1

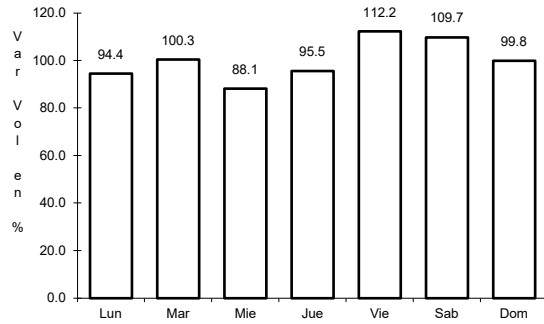


Km: 7.70                      Tipo: 3                      Sent: 2

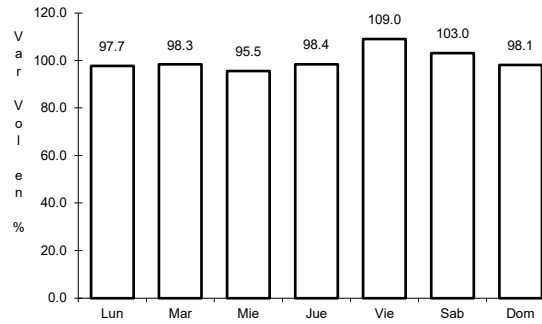
34 CARR: Corral de Piedras - Tlaltenango

CLAVE: 32579

ruta: ZAC



Km: 0.00      Tipo: 3      Sent: 0

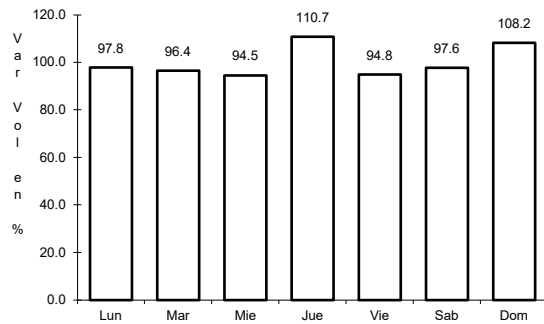


Km: 57.10      Tipo: 1      Sent: 0

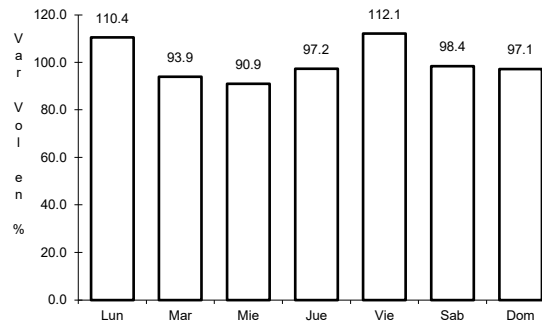
35 CARR: Ent. Ojo Caliente - Ent. Ojuelos de Jalisco

CLAVE: 00126

ruta: ZAC



Km: 0.00      Tipo: 3      Sent: 0

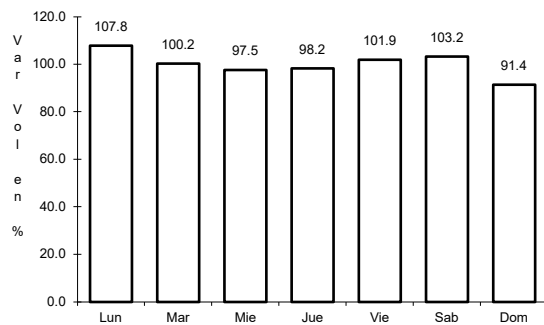


Km: 16.00      Tipo: 3      Sent: 0

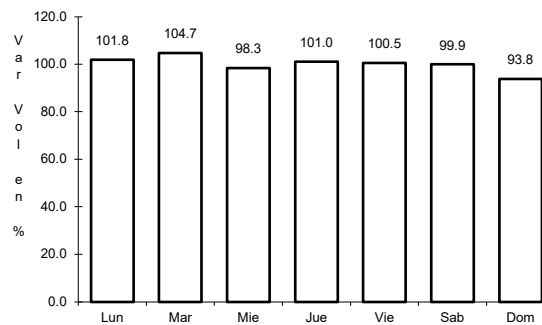
36 CARR: Fresnillo - Ent. Bañón

CLAVE: 32070

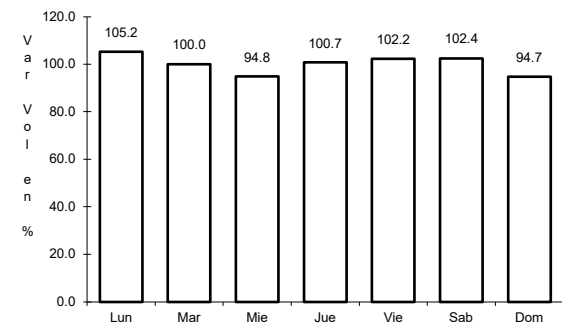
ruta: ZAC



Km: 2.40      Tipo: 3      Sent: 1



Km: 2.40      Tipo: 3      Sent: 2

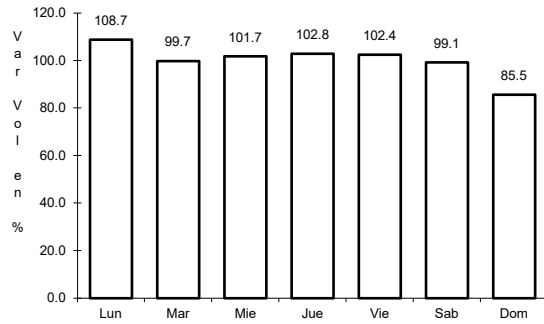


Km: 49.00      Tipo: 1      Sent: 0

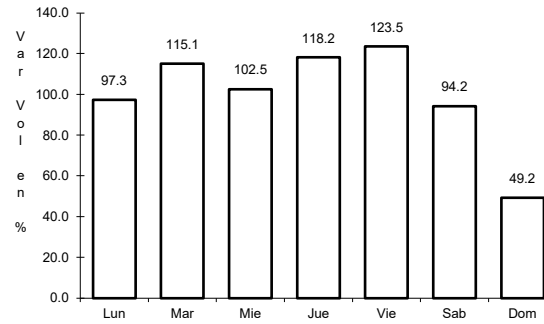
37 CARR: Fresnillo - Plateros

CLAVE: 32022

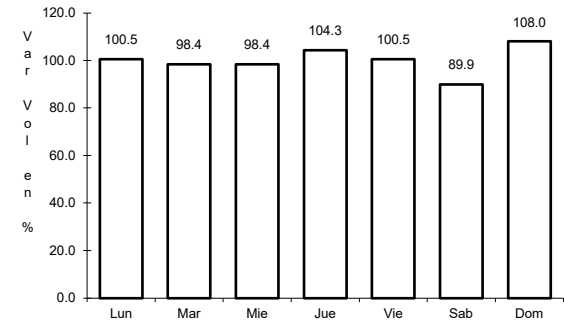
ruta: ZAC-022



Km: 0.00                      Tipo: 3                      Sent: 1



Km: 0.00                      Tipo: 3                      Sent: 1

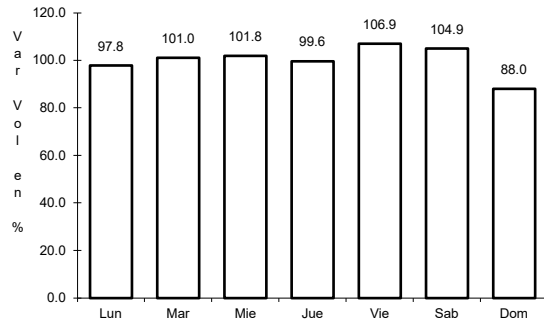


Km: 0.00                      Tipo: 3                      Sent: 2

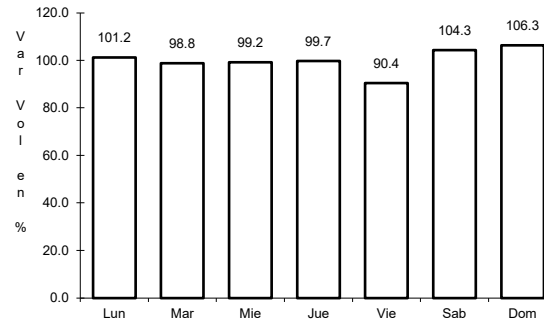
38 CARR: Guadalupe - Ent. Cuauhtémoc

CLAVE: 00579

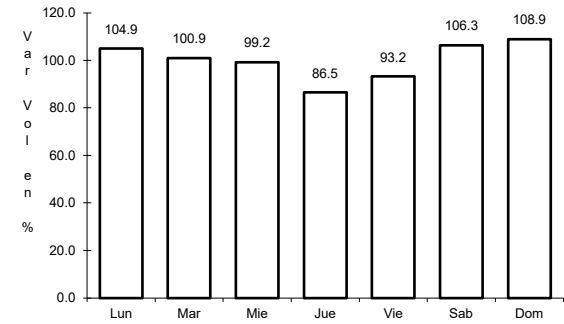
ruta: ZAC-118



Km: 0.00                      Tipo: 3                      Sent: 1



Km: 0.00                      Tipo: 3                      Sent: 2

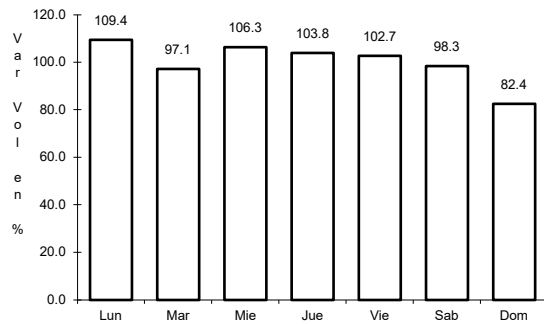


Km: 39.31                      Tipo: 1                      Sent: 0

39 CARR: Ramal a Loreto

CLAVE: 32067

ruta: ZAC

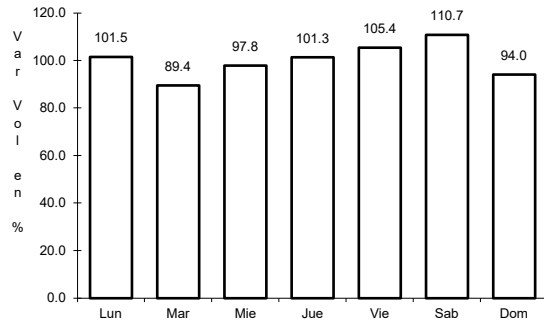


Km: 0.00                      Tipo: 3                      Sent: 0

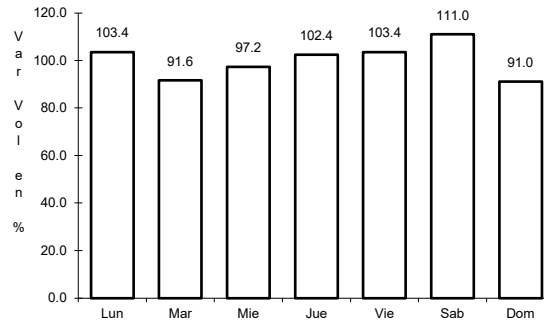
40 CARR: Ramal a Nochistlán

CLAVE: 32545

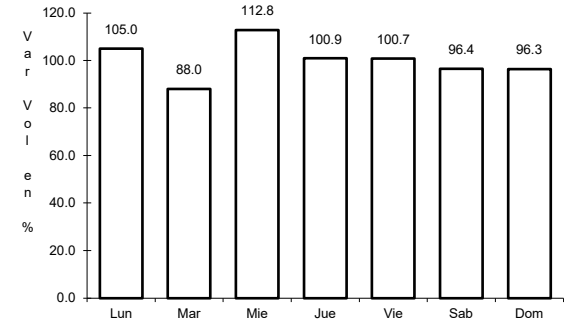
ruta: ZAC



Km: 0.00      Tipo: 3      Sent: 1



Km: 0.00      Tipo: 3      Sent: 2

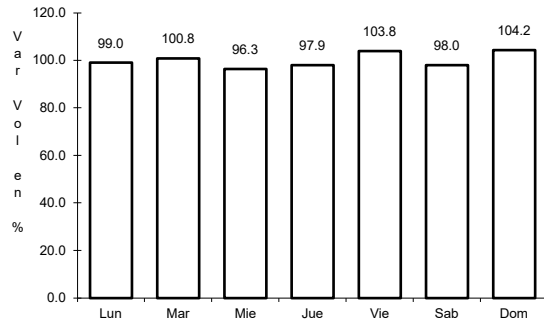


Km: 5.70      Tipo: 1      Sent: 1

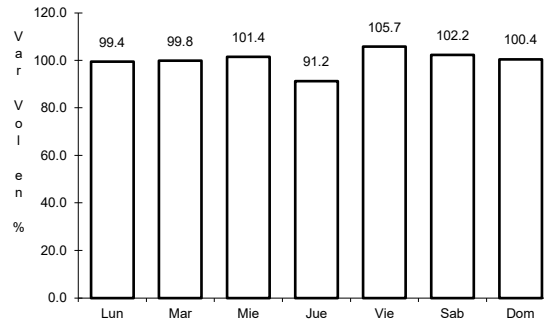
41 CARR: Ramal a San Pedro Piedra Gorda

CLAVE: 00553

ruta: ZAC-AGS



Km: 0.00      Tipo: 3      Sent: 0

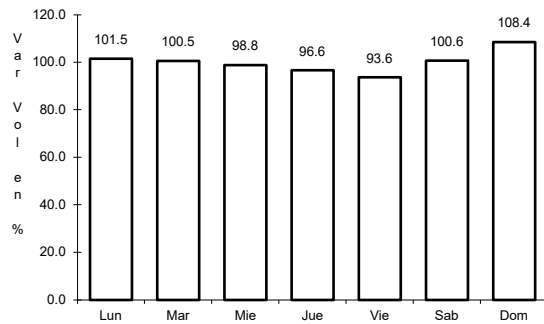


Km: 9.00      Tipo: 1      Sent: 0

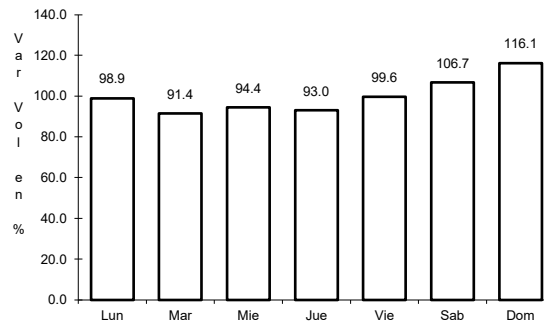
42 CARR: San Gil - Jarillas

CLAVE: 00527

ruta: AGS-012-ZAC



Km: 0.00      Tipo: 3      Sent: 0

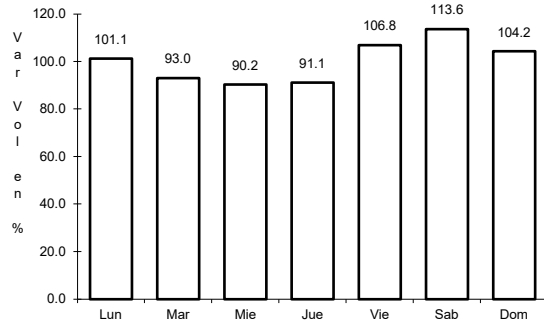


Km: 5.40      Tipo: 1      Sent: 0

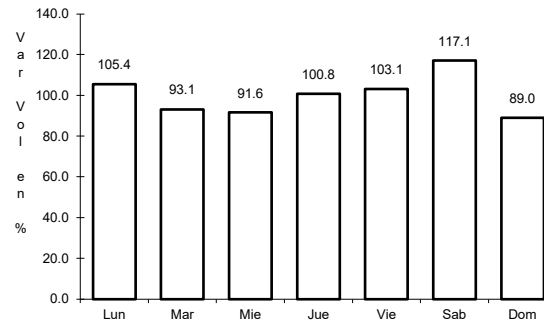
43 CARR: San Rafael - Villa García

CLAVE: 00525

ruta: AGS-ZAC



Km: 0.00      Tipo: 3      Sent: 0

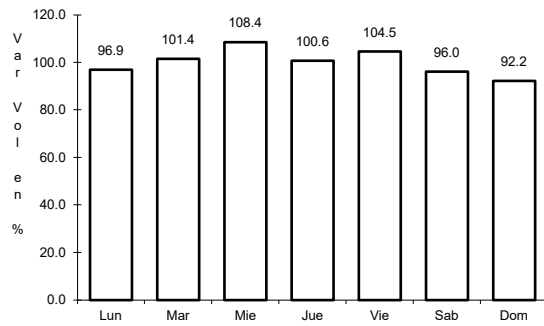


Km: 10.00      Tipo: 1      Sent: 0

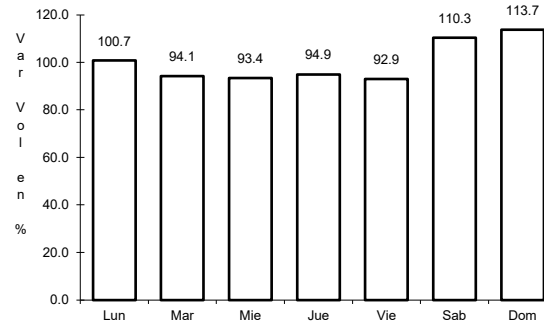
44 CARR: Santa Mónica - Pozo de Gamboa

CLAVE: 32568

ruta: ZAC



Km: 0.00      Tipo: 3      Sent: 0

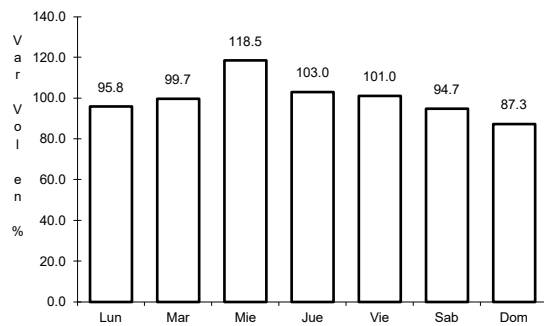


Km: 7.60      Tipo: 3      Sent: 0

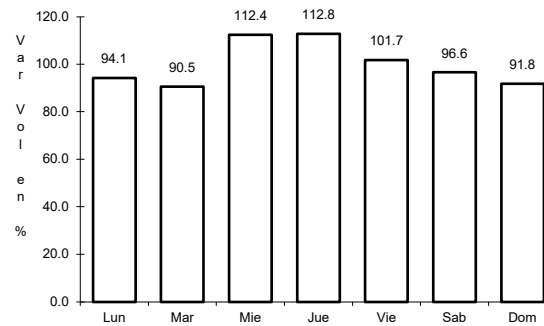
45 CARR: Sombrerete - González Ortega

CLAVE: 32568

ruta: ZAC



Km: 0.00      Tipo: 3      Sent: 0

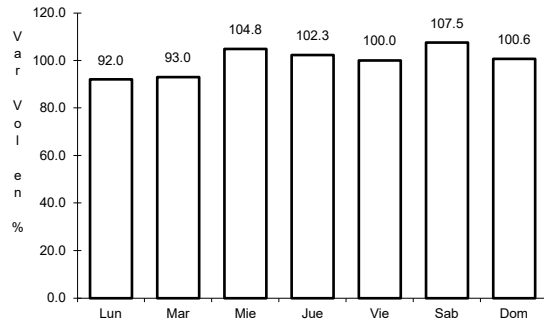


Km: 38.70      Tipo: 1      Sent: 0

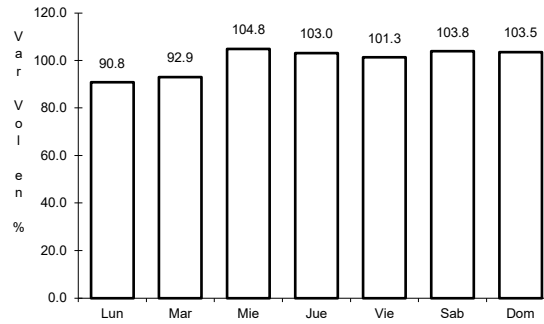
46 CARR: Yahualica - Jaralillo

CLAVE:

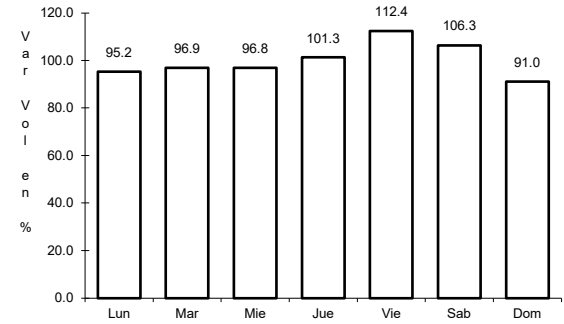
RUTA: JAL-ZAC



Km: 0.00                      Tipo: 3                      Sent: 1



Km: 0.00                      Tipo: 3                      Sent: 2

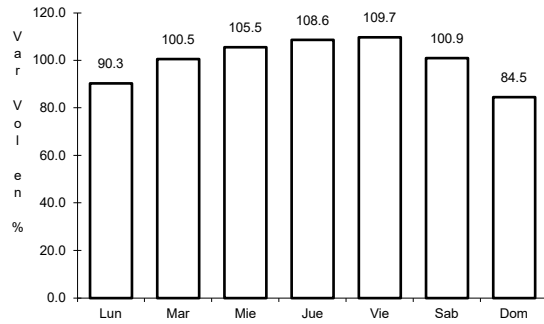


Km: 96.00                      Tipo: 1                      Sent: 0

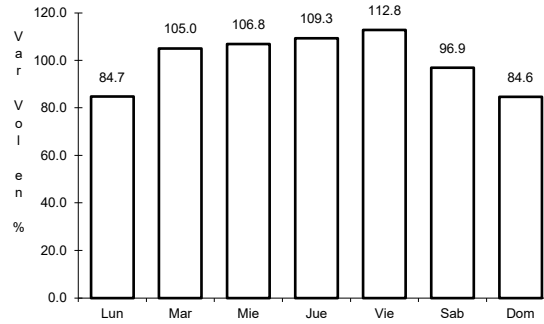
47 CARR: Libramiento Noreste de Zacatecas (Cuota)

CLAVE: 32582

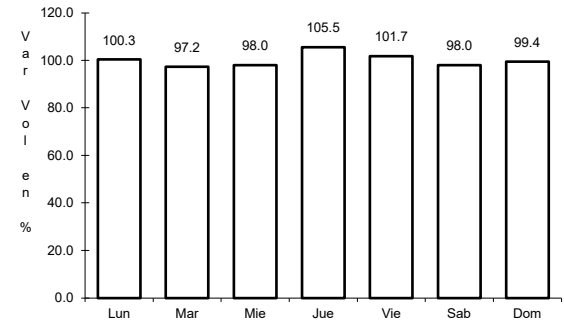
RUTA: ZAC-D



Km: 102.00                      Tipo: 3                      Sent: 0



Km: 125.00                      Tipo: 1                      Sent: 0



Km: 157.00                      Tipo: 1                      Sent: 0